



Social Monitoring Report

PUBLIC

Semestral Report: January 2022 – June 2022
August 2024

India: Assam Power Sector Investment Program - Tranche 3

Prepared by Assam Power Generation Corporation Limited (APGCL) for the Asian Development Bank (ADB).

This social monitoring report is a document of the borrower. The views expressed herein do not necessarily represent those of ADB's Board of Directors, Management, or staff, and may be preliminary in nature. Your attention is directed to the "terms of use" section of ADB's website.

In preparing any country program or strategy, financing any project, or by making any designation of or reference to a particular territory or geographic area in this document, ADB does not intend to make any judgments as to the legal or other status of any territory or area.

Asian Development Bank

Social Safeguard Monitoring Report

Reporting Period : January to June 2022

SFG Log: 6073

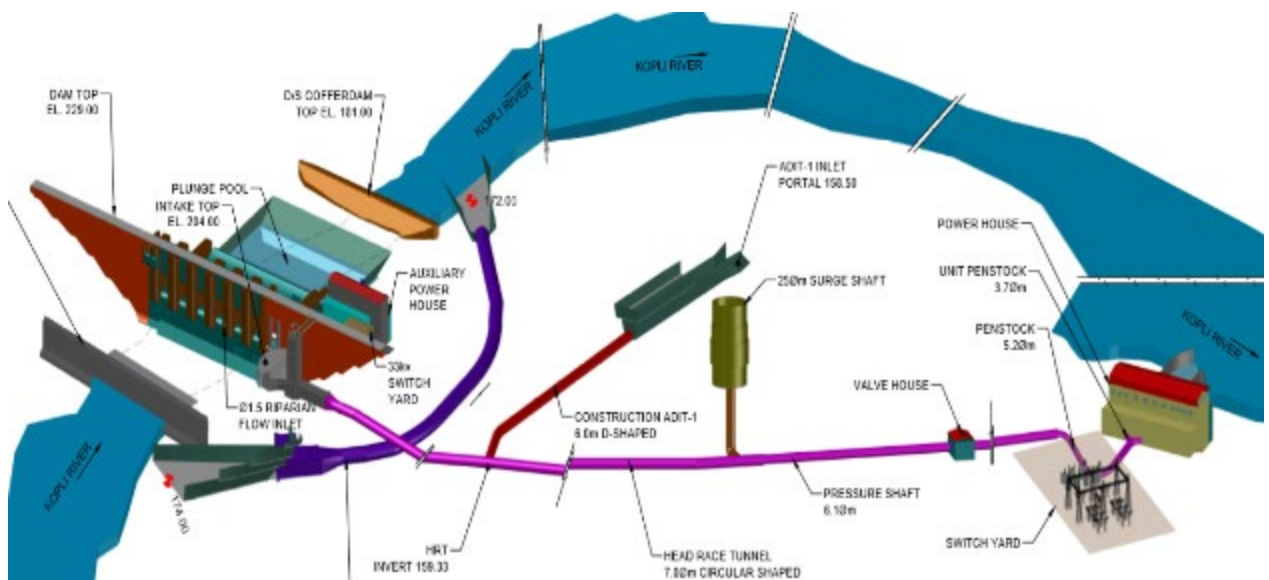
Assam Power Sector Investment Program–Tranche 3
Sovereign (Public) Project | 47101-004

Prepared by the Assam Power Generation Corporation Limited (APGCL) for the Asian
Development Bank



Semi-annual Social Monitoring Report

Lower Kopili Hydro Electric Project, Assam



Reporting Period: January to June 2022

CONTENTS

EXECUTIVE SUMMARY	1
CHAPTER 1. INTRODUCTION	3
1.1 BACKGROUND	3
1.2 SCOPE OF REPORT	3
1.3 DESCRIPTION OF PROJECT	3
1.4 SALIENT FEATURES: CONTRACT DETAILS FOR CIVIL WORKS	4
1.5 PROJECT OBJECTIVES AND OUTCOME	5
1.6 PROJECT IMPLEMENTATION ARRANGEMENTS	8
1.7 APPOINTMENT OF ADMINISTRATOR AT STATE LEVEL	8
1.8 COMMISSIONER FOR REHABILITATION AND RESETTLEMENT	8
1.9 THE PROJECT MANAGEMENT UNIT	8
1.10 SOCIAL AND ENVIRONMENTAL SAFEGUARDS CELL AT PMU	8
1.11 PROJECT MANAGEMENT CONSULTANTS	10
1.12 IMPLEMENTATION SUPPORT -NGO	11
CHAPTER 2. PROJECT STATUS.....	13
2.1 STATUS OF PROJECT IMPLEMENTATION	13
2.2 STATUS OF PROJECT RESETTLEMENT ACTIVITIES	14
CHAPTER 3. PERFORMANCE MONITORING	18
3.1 COMPLIANCE WITH LEGAL AND POLICY REQUIREMENTS.....	19
3.2 COMPLIANCE WITH SOCIAL SAFEGUARD COVENANTS	19
3.3 GENDER	20
3.4 COMPLIANCE WITH COMBINE RESTTLEMENT AND TRIBAL DEVELOPMENT PLAN REQUIREMENTS	26
3.4.1 Land Requirement for Various Project Components	26
3.4.2 Scope and Type of Land for Project Components.....	26
3.4.3 Loss of Crops and Trees	27
3.4.4 Loss of common/government properties.....	27
3.4.5 Impacts on structures	28
3.5 SUMMARY OF IMPACTS	28
3.6 STATUS OF PAYMENTS OF COMPENSATION, ALLOWANCES AND ASSISTANCE	29
3.7 RESTTLEMENT SITE DEVELOPMENT- IDENTIFICATION OF AREA.....	30
CHAPTER 4. GRIEVANCE REDRESSAL MECHANISM.....	31
4.1 GRIEVANCE REDRESS PROCESS	31
4.2 OTHER PATHS TO REDRESS GRIEVANCES	31
4.3 CONSITUTION OF GRC.....	31
4.4 PRESENT STATUS OF GRIEVANCES IN DIMA HASAO DISTRICT.....	33
4.4.1 GRC Record-Keeping:.....	34
4.4.2 GRM Costs	34
4.4.3 Meetings of GRC.....	35
CHAPTER 5. STAKEHOLDER ENGAGEMENT.....	36
5.1 STAKEHOLDER ENGAGEMENT PROCESS.....	36
5.2 CONSULTATIONS CONDUCTED DURING CRTDP PREPARATION.....	36
5.3 CONSULTATIONS DURING CRTDP IMPLEMENTATION.....	37
5.4 COMMUNITY MEETINGS CONDUCTED BY THE CRTDP IMPLEMENTING NGO	41
5.5 CAPACITY BUILDING TRAINING	43
CHAPTER 6. SUMMARY OF MONITORING RESULTS & KEY FINDINGS	45
6.1 WAY FORWARD	45

LIST OF TABLES

Table 1-1: Details of Contract for Packages and Present Status	4
Table 1-2: Importance of 120 MW LKHEP	5
Table 1-3: Details of Environmental and Social Experts in PMU	9
Table 1-4: Details of Environmental and Social Experts in PMC	10



Table 1-5: Details of Key Experts and Support Staff in NGO team	11
Table 1-6: Status of NGOs inputs	12
Table 2-1: Progress of Work	13
Table 2-2: Project Resettlement Activities	14
Table 3-1: Status Social Safeguard Covenants	22
Table 3-2: Summary of Project Impacts	26
Table 3-3: Land Area Required for the Project Components	26
Table 3-4: Scope and Type of Land for Project Components	27
Table 3-5: Type of trees and crops impacted	27
Table 3-6: Details of Village wise government/community properties in District Dima Hasao	27
Table 3-7: Summary of structures verified by NGO	28
Table 3-8: Summary of Impacts	29
Table 3-9: Status of Payments of Compensation (Land including Zirat)	29
Table 4-1: Grievance Redressal Committees	32
Table 4-2: Summary of Grievances Received	34
Table 5-1: Format for Public Consultation and Disclosure Plan	36
Table 5-2: Consultation with various stakeholders and Affected Community	38
Table 5-3: Consultation/meetings conducted by NGO	41
Table 5-4: Institutional Capacity of APGCL Strengthened	44

LIST OF FIGURES

Figure 1: Project Location Map (Source: Google Maps)	6
Figure 2: Project Organization Structure	10
Figure 3: Glimpses of Consultations with DPs and APGCL, PMC	39
Figure 4: Consultation/meetings conducted by NGO	42

LIST OF ANNEXURES

Annexure 1	:	Notification of Appointment of Administrator at State Level
Annexure 2	:	Office order regarding constitution of the GRC
Annexure 2a	:	Partial Modification in GRC Constitution
Annexure 3	:	Entitlement Matrix (CRTDP)
Annexure 4	:	MoMs and Summary of Consultation done by NGO
Annexure 5	:	Short Report on Annual Training for APGCL Staff_28.06.2022

EXECUTIVE SUMMARY

1. The Lower Kopili Hydroelectric Power (LKHEP) presently under implementation would serve the growing demand for electricity in the state of Assam, sustain a healthy share of renewable energy in the Assam grid, and assist in moderating the delivered cost of power for distribution companies. The proposed LKHEP will use the hydropower potential of the Kopili River, a south bank tributary of the Brahmaputra River. LKHEP is designed to operate as a run-of-river power plant with diurnal storage with a total capacity of 120 megawatts (MW) comprising a main plant rated at 110 MW and an auxiliary plant rated at 10 MW. The main plant would receive water diverted at the dam to be built in Longku on Kopili River, while the auxiliary power plant is located at the bottom of the dam at Longku, using water released at the bottom of the dam to maintain the minimum river flow downstream of Longku.
2. Assam requires additional generating capacity to fulfil the needs of the state to uplift the state economy, to serve the unmet needs of existing customers, and to complete the household electrification. This additional generating capacity being of lower cost, allowing the state to continue to maintain the present generation costs, or even reduce such costs. Compared with oil, gas and coal, the three other primary energy options available to Assam to enhance its generating system, hydroelectric generation provides a lower cost, and environmentally less polluting resource. LKHEP fulfils a portion of such needs. With several hydropower plants planned, amidst increasing capacity of thermal generation, Assam can maintain the share of hydropower capacity in the range of 33%, which is higher than the national average for hydropower capacity.
3. The Project affects 17 villages under the jurisdiction of two autonomous districts (Dima Hasao and Karbi Anglong) with 1214 tribal Families respectively. The Project will acquire 1,577 hectares (Dima Hasao Revenue Land -909, and Forest land 478 Hectares, Karbi Anglong Revenue Land - 45 and Forest Land - 145 Hectares) of land of which about two-thirds are leaseholds and the remaining of land are state forests. The Project is in a 'non-cadastral' area, that is, no land or revenue records are available other than the data on the leased land parcels to tribal persons. All affected lands in the two ADC are classified as either patta (registered) land or as non-patta land or 'village commons'. Farmers cultivate paddy under rain-fed conditions on some of the patta land which have been obtained on a long-term lease (5 years or more). On non-patta lands which have been obtained on short-term lease (one year) villagers' practice jhum (slash-and-burn) cultivation. The leaseholds are also classified by the land use type such as paddy land, dry land, jhum land (slash and burn) land, and homesteads. In Karbi Anglong Autonomous District, some land is in the category of 'plantations' where cash crops such as bananas are cultivated.
4. There are various mitigation measures adopted for the Project in terms of entitlements at both household level and community level. The entitlement matrix of the CRTDP summarizes the entitlements of the affected families and communities. It aims not only to compensate land losses and restore livelihoods and sources of income of the affected Families but also to improve them. The key mitigation measures proposed at household levels are cash compensation for land



and crops acquired; resettlement of physically displaced Families ; household income restoration and improvement; infrastructure and other amenities at the resettlement site. The mitigation measure proposed at community level is the local area development program.

5. APGCL has already disseminated resettlement information among the Affected Families (AF) through public meetings, calling AFs representatives to Guwahati for Project meetings and to meet Government of Assam (GoA) and Autonomous District Councils (ADC) officials. The APGCL held several meetings in the project area with the support of Lower Kopili Hydro Electric Power Project Affected Persons' Associations (LKHEPPAPA) and Gaon Bura of the villages to create awareness about the Project among the potential AFs. It will disseminate more resettlement and income restoration and improvement information among all AFs through brochures, leaflets, and booklets written in local languages. For non-literate people, other communication methods such as small group discussions and posters will be used to disseminate Project and resettlement information. The summary draft CRTDP has been translated into Assamese language and has been disseminated to the AFs in the form of leaflet in April 2018 during consultations.

6. PMC was already recruited to assist APGCL in implementing the project. Additionally, APGCL has already been hired an implementing NGO to assist Social and Environmental Safeguard Cell (SESC) in safeguard implementation, especially the implementation of livelihood restoration and improvement programs. The main objectives to engage the NGO (a) to update the socioeconomic surveys for all the AFs based on the final design and final list of AFs, and will update the draft CRTDP; (b) design an environmental and social management system for the implementation of the CRTDP; (c) improve the monitoring framework with accurate monitoring indicators for safeguard performance monitoring; (d) update socioeconomic baseline information; (e) undertake field studies, if required, to fill in gaps in socioeconomic databases; and (f) assist the establishment of the grievance redress mechanism and its operations.

CHAPTER 1. INTRODUCTION

1.1 BACKGROUND

7. The purpose of this semi-annual Social Monitoring Report (SMR) is to monitor the progress of Combined Resettlement and Tribal Development Plan (CRTDP) and record social, economic, and cultural aspects of the proposed Lower Kopili Hydro Electric Project (LKHEP) area and its affected communities. The SMR will also cover the progress and achievements in implementation of Gender Action Plan. A key monitoring area of the report is to obtain the Affected Families (AFs) to benefit from the Project; and to restore and improve their livelihoods and sources of income. It is also examining the institutional arrangements for delivering entitlements and project benefits to the AFs and other stakeholders. Function of GRC and the adopted mechanism for resolving grievances and complaints will also be briefed in the SMR.

8. The executing agency (EA) of LKHEP is Assam Power Generation Corporation Ltd (APGCL). It pays for land acquisition and compensation, relocation of the AFs, and their income restoration and improvement. APGCL through its PMU, PMC and implementing NGO will be implementing the CRTDP.

1.2 SCOPE OF REPORT

9. Prior to initiation of civil works, the social impact was assessed and classified as per ADB SPS 2009 as Category A for both Involuntary Resettlement and for Indigenous Peoples. The compensation and entitlement matrix are based on the resettlement planning documents of 2018. The payment of compensation has been made to most affected families in Dima Hasao District. The Socio-economic and census survey has not yet been initiated in the Karbi Anglong District due to certain unavoidable circumstances- of which restrictions on inter district movement due to COVID situation is the major one. The scope of this semi-annual report is to explore the progress of the resettlement (IR) and assess the status of the RP implementation. The prerequisite of the internal social safeguard monitoring activities is focusing on the status of implementation of the social safeguard issues, effectiveness in implementation of the social program and provision of feedbacks and suggestions for the full compliance with ADB and Government of Assam rules and regulations.

1.3 DESCRIPTION OF PROJECT

10. The Assam State Electricity Board (ASEB), The Northeastern Electric Power Corporation (NEEPCO), and APGCL have contributed to the development of plan for Kopili River Valley in 1980. The GoA in 2006 appointed APGCL to finalize the project plan and implement it. A DPR was prepared, and clearance obtained from various directorates including from the Central Electricity Authority (CEA) and Central Water Commission (CWC).

11. The dam proposed to be built at Longku will be a concrete gravity dam, of height 70 meters (m) and width 345 m. The crest of the dam will be 232.5 m above mean sea level (MSL). The dam will create a reservoir at Longku with a spread of 552 hectares (ha), with live storage of 77 million cubic meters. A tunnel will be excavated to deliver the water from the reservoir to the



main power plant. Water from the intake to the main power plant enters the tunnel of diameter 6.65 m on the right bank of the Kopili River. This tunnel will be 3.6 kilometre (km) long. At the end of this low-pressure tunnel, water will enter the pressure shaft. The pressure shaft will be circular of 5.2 m diameter, steel lined, with a length of 704 m. The pressure shaft will deliver water to two steel penstocks each of length of about 60 m, which in turn would convey water to the turbines. Water to the auxiliary power plant will be taken directly along a steel-lined circular pressure shaft of diameter 2.7 m and of length 70 m, and delivered to the turbine through three steel penstocks, each about 30 m long. The designed discharge capacity is 112.7 cubic meters per second (m/s), at a flow velocity of 3.13 m/s.

12. The Kopili River is a tributary of the Brahmaputra River. It originates in the Borail Hill Range of Meghalaya, the catchment of the Kopili River lies on the leeward side of the Borail, Khasi and Jaintia Hill ranges. Good amount of rainfall keeps it as Perennial River. Lower Kopili Hydro-Electric Project (LKHEP) is a run of the river scheme with diurnal storage on the Kopili River at Longku in east of Karbi Anglong and west of Dima Hasao Assam districts. The project is envisaged to run at full potential in monsoon season and operate as a peaking station in non-monsoon season. The total installed capacity is 120 MW, generated by Main Powerhouse with 2 units of 55 MW installed capacity each, and an Auxiliary Powerhouse with 3 units of 2.5+2.5+5.0 MW installed capacity.

13. The LKHEP is part of stage development of the Kopili River valley near Longku village, with the Dam site at 25°39'57.39" N and 92°46'53.62" E and the Powerhouse site at 25°41'54.02" N and 92°48'15.98" E. The first stage, which is upstream of the LKHEP, comprises of 3 x 25 MW Kandong HEP and 4 x 50 MW Kopili HEP. The project location is shown in **Figure 1: Project Location Map (Source: Google Maps)**.

14. The Project can be reached by NH-52 Guwahati – Lanka Road and Lanka - Project Site Road (~155km+~48km). Besides the Power Plant Complex, LKHEP includes 14 new Access Roads within the Project Site Area for access to various Project components:

1.4 SALIENT FEATURES: CONTRACT DETAILS FOR CIVIL WORKS

15. The following **Table 1-1: Details of Contract for Packages and Present Status** presents the contract details of project following the project location map provided in **Figure 1: Project Location Map (Source: Google Maps)**.

Table 1-1: Details of Contract for Packages and Present Status

Employer	Assam Power Generation Corporation Limited (APGCL)	
PMC	AF Consult Switzerland in association with United Engineers Alliance India	
Contract	Contract agreements with APGCL (Chronology of Events):	Key Dates
	➤ Notice to Proceed for Phase-A, issued.	26/07/2017
	➤ Contract for Consulting Services, signed.	04/10/2017
	➤ Contract for Phase-B Services signed.	11/01/2021
Package 1:	➤ Yet to be awarded	



Package-2: Contract (Project Roads, Civil & HM Works)	➤ Notice to proceed issued to M/s. L&T Ltd, by APGCL with commencement date effective from 01/09/2020.	31-08-2020
Package 3:	➤ Package was awarded to M/s Andritz Hydro Pvt. Ltd.	09/09/2021
Package-4: Construction of 220 KV Double Circuit Transmission Line from Lower Kopili Hydroelectric Project to Sankardev Nagar Grid Substation	<ul style="list-style-type: none"> ➤ Contract Agreement was signed with M/s. Salasar Techno Engineering Limited (Lead Partner) and M/s. Akelik Group (JV Partner) ➤ Construction of 220 KV Double Circuit Transmission Line from Lower Kopili Hydroelectric Project to Sankardev Nagar Grid Substation on Turnkey Basis. ➤ Contractor to identify impacts related to IR as per Resettlement and IPP (RIPP) prior to commencement of works. ➤ TKC Contractor yet to be mobilized during the Monitoring Period 	27/05/2022

1.5 PROJECT OBJECTIVES AND OUTCOME

16. Assam requires additional generating capacity to fulfil the needs of the state to uplift the state economy, to serve the unmet needs of existing customers, and to complete the household electrification. This additional generating capacity requires to be of lower cost, allowing the state to continue to maintain the present generation costs, or even reduce such costs. Compared with oil, gas, and coal, the three other primary energy options available to Assam to enhance its generating system, hydroelectric generation provides a lower cost, and environmentally less polluting resource. LKHEP fulfils a portion of such needs. With several hydropower plants planned, amidst increasing capacity of thermal generation, Assam can maintain the share of hydropower capacity in the range of 33%, which is higher than the national average for hydropower capacity.

17. The proposed Tranche 3 project has three outputs: (i) construction of the 120 MW Lower Kopili hydroelectric power plant; (ii) strengthening of institutional capacity of Assam Power Generation Corporation Limited (APGCL); and (iii) improving resource management and community resilience along the Kopili River. The 120 MW Lower Kopili Project has a very important role in electricity demand for the Assam state as described in **Table 1-2: Importance of 120 MW LKHEP.**

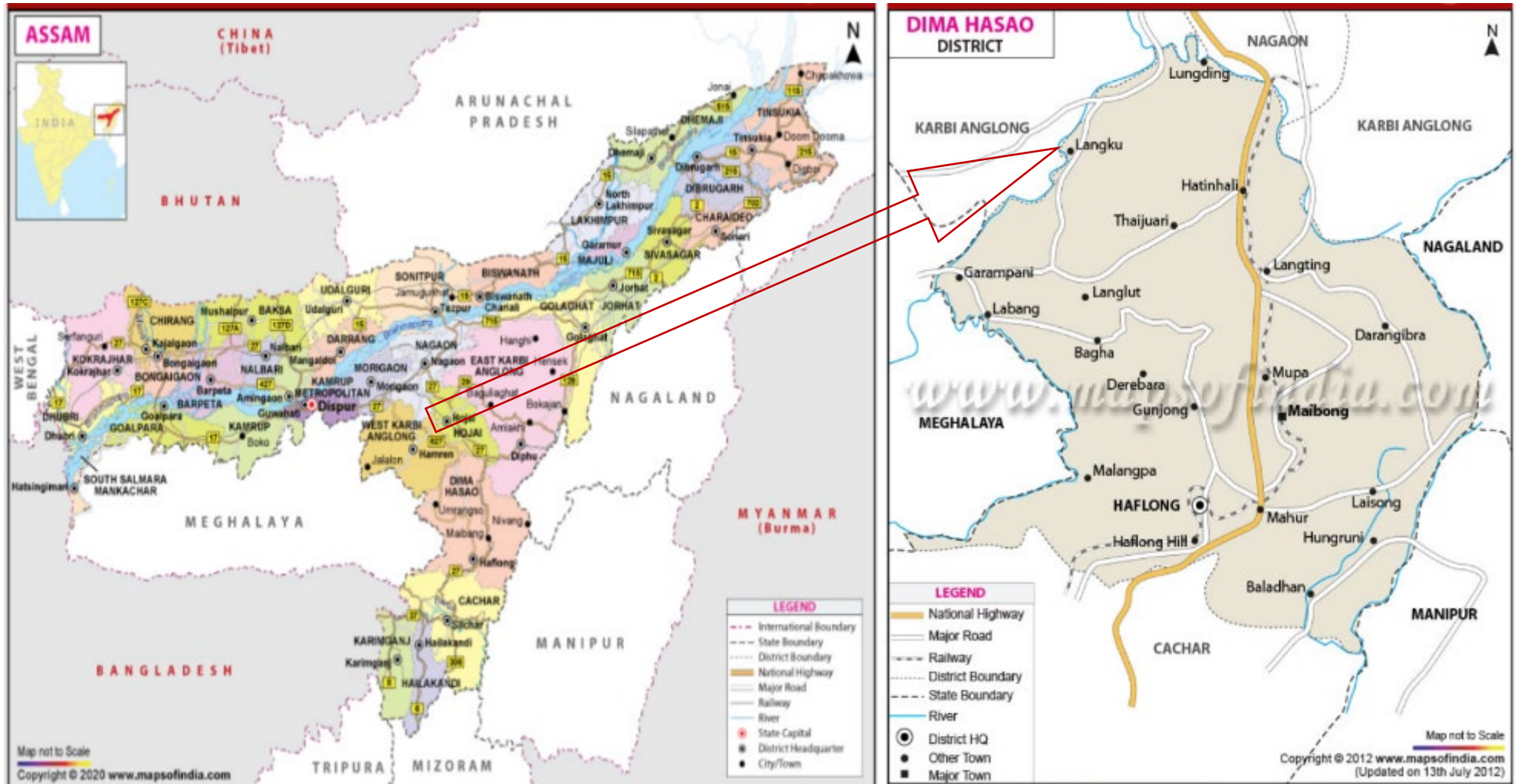
Table 1-2: Importance of 120 MW LKHEP

Importance of 120 MW LKHEP	
✓	The outcome of the project will be increased capacity of energy generation in Assam, where electricity generation will be increased by 469 gigawatt-hour/year (GWh/year).
✓	Greenhouse gas generation from electricity generation will decrease by 360,000 total carbon dioxide (tCO ₂)/year from 2024 onwards.



Figure 1: Project Location Map (Source: Google Maps)





1.6 PROJECT IMPLEMENTATION ARRANGEMENTS

18. The Department of Energy of GoA will coordinate all project activities at the state level. APGCL is the executive agency (EA) of the project. It has already established a Project Management Unit (PMU). The implementing Agency (IA) of the project is also APGCL. APGCL and the NGO contracted for safeguard implementation are responsible for the application of environmental and social safeguards to the project including proper implementation of various components of the CRTDP.

1.7 APPOINTMENT OF ADMINISTRATOR AT STATE LEVEL

19. State Government of Assam has already notified an officer not below the rank of Joint Collector or Additional Collector or Deputy Collector or equivalent official of Revenue Department, who will be responsible for the implementation of CRTDP (R&R Plan) at the State Level. This has already been established and a copy of the government order to this is attached in Annexure 1.

20. Administrator shall, to function efficiently and to meet the timeframe of CRTDP, be provided with such powers, duties and responsibilities as may be prescribed by the appropriate Government. Administrator will also be provided with office infrastructure and be assisted by officers and employees appointed by the appropriate Government.

21. Subject to the superintendence, directions and control of the Appropriate Government and the Commissioner for Rehabilitation and Resettlement, the formulation, execution and monitoring of the Rehabilitation and Resettlement Scheme shall vest with the Administrator.

1.8 COMMISSIONER FOR REHABILITATION AND RESETTLEMENT

22. The state government shall appoint an officer of the rank of commissioner or secretary of that government for resettlement and rehabilitation of affected Families under the Act of 2013. They will be called the commissioner for rehabilitation and resettlement. The Commissioner shall be responsible for supervising the formulation of rehabilitation and resettlement schemes or plans and proper implementation of each scheme or plans. The Commissioner shall be responsible for the post implementation social audit in consultation with the Gram Sabha in rural areas and municipality in the urban areas.

1.9 THE PROJECT MANAGEMENT UNIT

23. APGCL and its PMU will work closely with the administrator and commissioner and get the necessary directions from them. PMU will send all documentation to the administrator and commissioner for approval and guidance. PMU will be responsible for day-to-day implementation and monitoring of the project including CRTDP. It covers all aspects of the project construction including compliance with safeguard requirements. APGCL has appointed a full-time project director to head the PMU. Administrative staff, project engineers, financial officers, the social and environmental safeguard cell, and the communication unit will assist the Director.

1.10 SOCIAL AND ENVIRONMENTAL SAFEGUARDS CELL AT PMU

24. The Project Director cum Chief General Manager, Project Planning & Implementation

(CGM, PP&I), APGCL, is leading and responsible for overall implementation of social and environmental safeguards. PMU already has a dedicated social and environmental safeguards cell (SESC) with a qualified full-time environment specialist and a qualified full time social safeguard specialist. The SESC will keep close contacts with head of PMU of APGCL regarding safeguard application and its progress. SESC oversees coordination, preparation, implementation, and monitoring of the approved CRTDP. It will assist PMCs to develop an environmental and social management system, and APGCL in updating and implementing CRTDP. The SESC will work with PMCs for overall management of social and environmental safeguards application. SESC facilitates land acquisition and compensation, relocation and resettlement, distribution of assistance to the AFs and supervision of income restoration and rehabilitation programs of the project. It will also be responsible for monitoring the implementation of all resettlement and rehabilitation activities, including land acquisition and compensation. APGCL has already established the PMU with designated staff on social and environment safeguards on a full-time basis, details are mentioned in the **Table 1-3: Details of Environmental and Social Experts in PMU** below:

Table 1-3: Details of Environmental and Social Experts in PMU

Name	Position
Dr. Deepak Kr. Baruah	Environmental Expert
Mr. Pankaj Hazarika	Social Expert

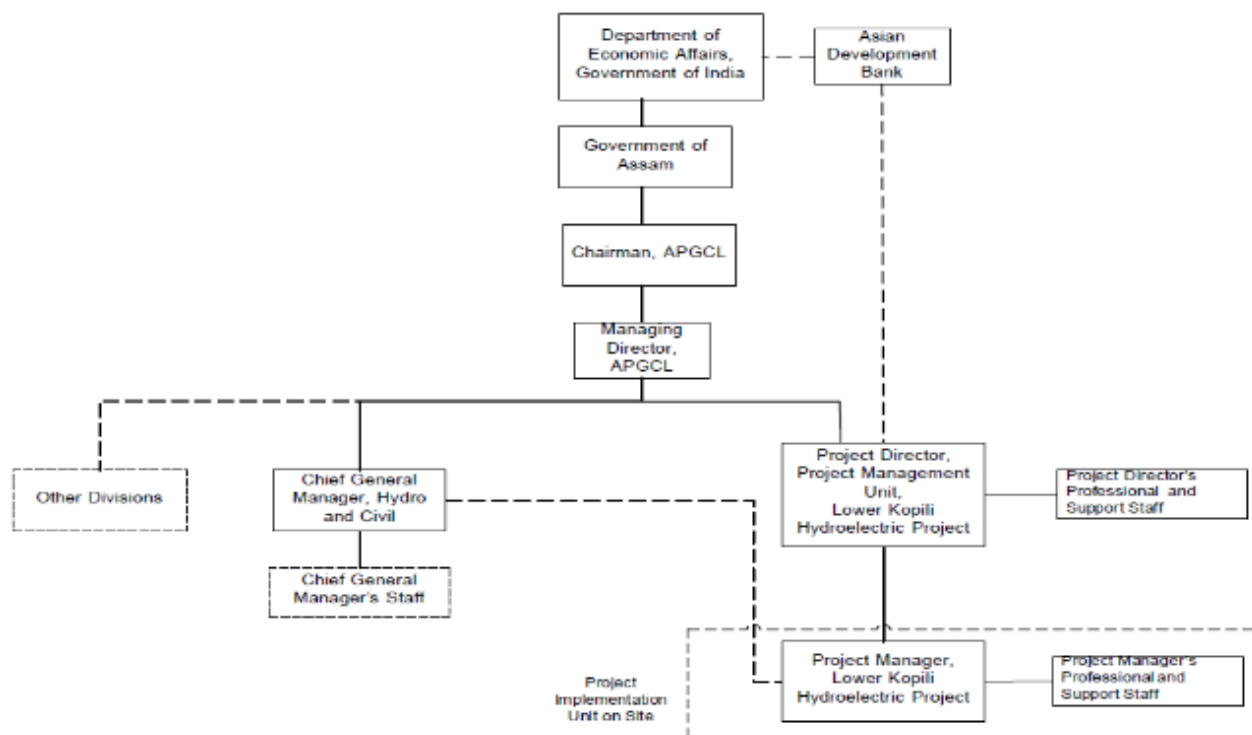
25. The responsibilities of SESC include:

- ✓ Responsible for all land acquisition activities and keeping records of land acquired, compensation paid, and when land was physically taken over for the Project;
- ✓ Liaison with the State and District levels departments and agencies to facilitate the AFs' access to services and income generating programs that are already in place;
- ✓ Coordinate the delivery of cash compensation and resettlement assistance to all entitled persons;
- ✓ Provide social development perspectives and inputs to on-going project design and implementation by working closely with project planners, contractors, and construction supervision consultants;
- ✓ Link the project with State government agencies, PWD field units and the impacted communities;
- ✓ Coordinate with the two ADCs regarding social development and resettlement operations; and support the NGO contracted and local community organisations such as PAPA who representing the AFs; and engage skill training services, oversee the grievance redress mechanism, monitor CRTDP implementation, and cooperate with planned project evaluations;
- ✓ If a panel of experts (POE) is appointed during project implementation, facilitate its

monitoring and evaluation programs.

26. The proposed organisation structures are presented in **Figure 2: Project Organization Structure** below:

Figure 2: Project Organization Structure



Source: PAM and as per the MOM of the interface meeting dated 24th January 2022.

1.11 PROJECT MANAGEMENT CONSULTANTS

27. APGCL has recruited the project management consultants (PMCs) to implement the project. In relation to safeguard compliance, the following actions are being carried out by PMC’s social and Environmental Safeguard Experts **Table 1-4: Details of Environmental and Social Experts in PMC** who are based at project site i.e., Longku:

Table 1-4: Details of Environmental and Social Experts in PMC

Name	Position
Dr. Jayanta Das	Environmental Expert
Mr. Sangram Singh	Social and Resettlement Expert

28. PMC prepares monthly progress reports on progress of CRTDP implementation and will ensure compliance in consultation with the Social and Environmental Safeguard Cell (SESC) on social, resettlement, and environmental aspects of the project including the progress in redressing AFs’ grievances and complaints. PMC social and resettlement safeguards specialists is assisting in preparation of the semi-annual monitoring report and will submit to PMU and PMU will submit it to ADB.

1.12 IMPLEMENTATION SUPPORT -NGO

29. APGCL has hired an NGO, M/s. Consultants for Rural Area Development Linked Economy, (CRADLE), in joint venture with Gramya Unnayan Santha to support updating of CRTDP, and to implement it. The signing of contract and the commencement was on 13th November 2019 and 28th November 2019 respectively. The following **Table 1-5: Details of Key Experts and Support Staff in NGO team** presents the proposed for implementation of CRTDP.

Table 1-5: Details of Key Experts and Support Staff in NGO team

Name	Position	Date of deployment
Key Professional		
Mr. Ashok Kumar Sah	Team Leader	21.11.2019
Mr. L.P. Singh	Social Development Expert Cum R&R Specialist	
Mrs. Sumana Das	Communication Specialist	
Mr. Mukut Deka	Training cum Livelihood Specialist	
Non-Key Expert		
Mr. Karuna Bora	Field Coordinator cum Community Worker	21.11.2019
Mr. Pankaj Deka	Field Coordinator cum Community Worker	
Miss Sangita Gayari	Field Coordinator cum Community Worker	
Miss Sanmoni Langmailai	Field Coordinator cum Community Worker	

30. The NGO is providing day-to-day implementation support to APGCL in addressing safeguard issues at the field level. The role of the NGO focuses on three activities (i) collection of additional baselines information from surveys, if required after the detailed design and final layout of the project is completed; (ii) assist PMU to implement CRTDP as per its entitlement matrix, distribution of identification cards to the AFs, disbursement of entitlements including compensation, and allowances to eligible AFs as per CRTDP; and (iii) raising awareness among the AFs, and dissemination of project information relating to land acquisition, compensation and resettlement planning and AFs' entitlements.

31. The NGO is also facilitating the AFs to submit the grievance applications (if any) to be resolved within the framework of Project's GRM. The Social Safeguards Expert of SESC is monitoring from PMU whereas Social and Resettlement Expert, PMC is supervising day-to-day activities of the NGO at project site. The NGO is working as a link between the AFs and APGCL. NGO as per terms of the ToR, are educating AFs on income restoration avenues and improvement measures including ensuring that the AFs use cash compensation in productive investments. Broad objectives of the NGO are:

- Identification, verification and updating of AP Census based on the final list and final design for updating the CRTDP.
- Develop micro plans in consultation with the AFs and PMU staff.

- Educate the AFs on their entitlements, and obligations.
- Prepare and distribute Project Identity Cards. All eligible project affected families will be given Identity Cards.
- Ensure that the AFs receive their entitlements. The NGO will provide advice to AFs on benefits of various income restoration options and assist them in getting benefits from various government development programs;
- The NGO will help the affected Families to derive maximum benefits from the project without losing their livelihoods and with least impacts on sociocultural aspects of their lives.
- Assist the AFs to use the GRM.
- The present scenario of the deployment and other status provided in **Table 1-6: Status of NGOs inputs:**

Table 1-6: Status of NGOs inputs

Sl. No.	Activity/agreed terms in CRTDP	Present Status	Remarks
1	The NGO staff is supposed to be stationed at the project site and regularly update the baseline information through group meetings and village-level meetings. Such meetings will be the arena to consult the AFs and to inform about the project's progress and the delivery of their entitlements.	In the monitoring period there were some challenges faced due to the pandemic restrictions imposed by GoA. Key staff mobilisation was difficult because of Covid-19 restrictions.	NGO advised to establish office at Longku for assigned activities and easy access by AFs and APGCL/PMC.
2	The frequency of meetings will depend on the requirements of the progress of implementation of CRTDP; however, at least once a month, the affected Families will be met by the NGO and rendered relevant support as well update them on projects progress.	Meetings are being carried out by NGO, but these are not on regular basis.	NGO is advised to conduct the regular meetings with AFs and particularly with Women. Livelihood restoration program requires more close interaction with the targeted group.
3	NGO will arrange meetings with all stake holders including revenue department, APGCL to effectively update IA on the project's progress and discuss key issues needing urgent attention.	Meetings with key stakeholders are not conducted by NGO.	NGO to apprise other stakeholders on key issues and feedback documented for effective implementation of the CRTDP program.



CHAPTER 2. PROJECT STATUS

32. The SESC is closely working with the Revenue department of both the ADCs and having regular interaction with AFs for the completion of disbursement of land compensation in Karbi Anglong ADC, in Dima Hasao payment of land and structure compensation has been completed. The following section was extracted from the PMC's monthly monitoring report supported by contractor's monthly reporting on work progress.

2.1 STATUS OF PROJECT IMPLEMENTATION

33. According to PMC's MPR the following in **Table 2-1: Progress of Work** presents the project implementation status as on 31st December 2021. For more details, technical monthly report can be referred.

Table 2-1: Progress of Work

Physical Progress Summary	TOTAL SCOPE	Actual Progress Upto May'22	L&T's Plan for Jun'22	Actual Achieved - Jun'22	% progress w.r.t total Scope	Balance Scope	Best Effort Completion Date	Remarks
Temporary Roads - Excavation - In meter	3899	3,899		-	100%	-		Completed
Permanent Roads - Excavation - In meter	7842	7,842	-	-	100%	-		Completed
Total Road Excavation works (In Meter)	11741	11741	0	0	100%	-		
Road Drain Construction works (In Meter)	10545	10,404	141	141	100%	-		
Road - GSB Laying works (In Meter)	11358	11,165	193	193	100%	-		
Road - WMM Laying works (In Meter)- 1st layer	11358	2,853	2,500	2,732	49%	5,773		
Road - WMM Laying works (In Meter)- 2nd layer	11358	-	2,500	1,070	9%	10,288		
TUNNEL EXCAVATION								
Diversion Tunnel - Heading Excavation - in Rm	413	413					28-02-22	Completed
Diversion Tunnel - Benching total - in Rm	413	413	-	-	100%	-	07-04-22	Completed on 15-04-22
RIVER - DIVERSION - MILESTONE								
Adit Tunnel to HEAD RACE TUNNEL - in Rm	358	358	-	-	100%	-	11-03-22	Completed
HRT Excavation - in Rm (Face-I)	950	-	10	-	0%	950		Face-II Started on
HRT Excavation - in Rm (Face-II)	1,241	136	40	20.0	13%	1,085	05-10-23	12-03-22. Progress is
HRT Excavation - in Rm (Face-III)	1,100	56	56	59.3	10%	985		low.
Pressure Tunnel - UG Excavation - in Rm	462	234	74	56.5	63%	171	02-09-22	As per Schedule.
Surge Shaft - UG Excavation - in Rm	47	5	3	-	11%	42	05-10-22	LAG by 3 month.
TUNNEL EXCAVATION (In Rm)	4,921	1,202	183	136	27%	3,583		



Physical Progress Summary	TOTAL SCOPE	Actual Progress Upto May'22	L&T's Plan for Jun'22	Actual Achieved - Jun'22	% progress w.r.t total Scope	Balance Scope	Best Effort Completion Date	Remarks
OPEN EXCAVATION FOR VARIOUS STRUCTURES								
Surge Shaft- Open excavation - In Cum	76,103	76,103			100%	-		Completed
Switch yard - In Cum	17,400	17,400			100%	-		Completed
Adit to HRT portal Open exc - In Cum	19,000	19,000			100%	-		Completed
DT Outlet Open Excavation - In Cum	7,000	7,000			100%	-		Completed
DT Inlet Portal Open Excavation - In Cum	37,431	37,431			100%	-		Completed
Valave House Open Excavation - In Cum	22,018	22,018			100%	-		Completed
Horizontal Pressure Shaft Open Exc. - In Cum	68,006	68,006			100%	-		Completed
Power Intake excavation - In Cum	82,042	81,485	557	557	100%	-	11-11-22	Completed
Inclined Pressure Shaft Open Excavation - In Cum	55,548	51,065	4,483	1,521	95%	2,962	10-10-22	Before Schedule.
Power House Open Excavation - In Cum	1,04,987	81,330	10,000	6,907	84%	16,750	31-05-22	LAG by 2 month.
Cofferdam excavation - In Cum	14,700	6,884	-	-	47%	7,816	30-06-22	LAG by 2 month.
Tail Race Channel - Open excavation - In Cum	55,000	25,413	8,000	7,744	60%	21,843	05-07-23	As per Schedule.
Right Bank Dam Excavation- In Cum	1,03,000	49,037	10,000	3,235	51%	50,728	25-11-22	2 months early start
Left Bank Dam Excavation - In Cum	1,00,000	11,464	10,000	-	11%	88,536	27-10-22	2 months early start
Aux. Power House - Open excavation	1,24,000	7,044	16,500	3,079	8%	1,13,877	19-05-23	7 months early start
Total Open excavation (In Cum)	8,86,235	5,60,680	59,540	23,043	66%	3,02,512		
CONCRETE WORKS								
Diversion Tunnel - Invert Lining (In Rm)	413	-	100		0%	413	22-05-22	LAG by 2.5 month.
U/s Cofferdam - Concrete (In Cum)	39,300	5,651	1,650	1,470	18%	32,179	27-10-22	LAG by one month.
DT Inlet Structure - Concrete (In Cum)	5,200	702	1,900	607	25%	3,891	28-05-22	LAG by 2.5 month.

2.2 STATUS OF PROJECT RESETTLEMENT ACTIVITIES

34. Project resettlement activities are being implemented as per agreed timeline, however due to various field constraints some challenges are being faced like non-availability of AFs during survey and consultation, busy schedule of revenue filed staff of ADCs etc. following **Table 2-2: Project Resettlement Activities** presents the status of project resettlement activities.

Table 2-2: Project Resettlement Activities

Activities	Responsible Agencies	Status	remarks
Project Initiation Stage			
Establish SESC	APGCL	Completed	SESC cell has been established at PMU.
Hire Environment and Social safeguards professionals of SESC	APGCL	Completed	Environmental and Social Safeguard Experts have been positioned.
Hire an NGO to implement CRTDP	APGCL	Completed	M/s. Consultants for Rural Area Development Linked



Activities	Responsible Agencies	Status	remarks
			Economy, (CRADLE), JV with Gramya Unnayan Santha has been engaged.
Hire Project Management Consultants	APGCL	Completed	AF Consult Switzerland in association with United Engineers Alliance India
Appoint a Grievance Redress Committee	APGCL/ADCs/ PAPA	Completed	Annexure-2
Finalize the CRTDP with final budget and timeline	PMU/SESC/NGO	Completed	The budget was finalised and the implementation of CRTDP is in progress. There is some delay according to the agreed timeline.
Disclosure of CRTDP after further consultations with the AFs and ADCs	APGCL/PMU/SESC/NGO	Completed	Ongoing process...
CRTDP Update			
Validate Census and survey findings	PMU/SESC/NGO	Completed	
Conduct socioeconomic surveys for all the affected Families /persons based on the final list and final design in order to update the CRTDP	NGO/PMC/SESC/PMU	Completed for Dima Hasao, for Karbi Anglong its yet to be done.	The Karbi Anglong ADC permission not received. SESC cell is in continued touch with Karbi Anglong ADC.
Conduct FGDs/consultations and group meetings	SESC/NGO/field level engineers/ Contractors	Initially during the socio-economic survey, NGO has conducted, however, there is no consultation since March 2020 due to pandemic COVID-19.	
Finalize entitlement matrix with a budget and	APGCL/PMU/SESC/NGO	For Dima Hasao District Micro plan has been prepared and submitted for approval from	Karbi Anglong yet to be completed.



Activities	Responsible Agencies	Status	remarks
timeline		PMC/APGCL.	
Disclosure of final entitlements to all AFs	PMU/SESC/NGO	Yet to be done	Once the micro plan is approved from APGCL, the same shall be disclosed.
CRTDP Implementation Stage			
Payment of compensation	PMU/SESC/ District Councils/ NGO	Compensation of Land and assets have been completed for 955 AFs (1369 properties) and 7 Common and government properties in the Dima Hasao Districts by APGCL. There are 215 AFs are in Karbi Anglong that have been paid compensation however, the socio-economic survey is yet to be initiated	
Give publicity to compensation payment	PMU/SESC/ District Councils/ NGO	Completed	
Consultations with the AFs during rehabilitation activities	PMU/SESC / District Councils/ NGO	As the CRTDP implementation NGO is inactive at the ground therefore this activity was pending, however, Social & Resettlement Expert PMC, Social Expert, APGCL and PAPA president has a consultation with all the AFs.	NGO has been requested to complete the rehabilitation activities as per CRTDP plan.
Implementation of income restoration programs	PMU/SESC/ District Councils/ NGO	Socio-economic survey has been completed and based on the education/skills of AFs, data has been captured.	
Relocation and rehabilitation programs	PMU/SESC/ District Councils/ NGO	A model house has been constructed and all displaced AFs were consulted for their views and acceptance. The decision from their side is awaited.	Relocation site for AFs who are losing the residential properties has been identified and finalised in consultation with APGCL and LKHEPPAPA.
Implementation of grievances redress mechanism	PMU/SESC/ District Councils/ NGO	Till date 402 grievances from the AFs have been recorded, the GRC committee of first	Resolution is yet to done.



Activities	Responsible Agencies	Status	remarks
		level has recommended all the grievance to the 2 nd tier	
Internal monitoring of social safeguard application	PMU/SESC/ District Councils/ NGO	Internal monitoring is being done in supervision of SESC by PMC Social and Resettlement Expert.	Bi-annual report submitted as per schedule.
External monitoring of social safeguards and Evaluation	PMU/external consultants/ international consultants	External Monitoring consultant has been appointed and kick-off meeting has been done.	The inception visit by the External Monitoring team has been scheduled in the month of Jan 2022.

CHAPTER 3. PERFORMANCE MONITORING

35. Both the APGCL and ADB have their own separate monitoring responsibilities. The extent of monitoring activities, including their scope and periodicity, will be commensurate with the project's risks and impacts. APGCL is required to implement safeguard measures and relevant safeguard plans, as provided in the legal agreements i.e., CRTDP, and to submit agreed periodic monitoring reports on their implementation performance.

36. The Lower Kopili HEP is classified as Environment Category A, Involuntary Resettlement (IR) Category A, and Indigenous Peoples (IP) Category A ("triple A") in accordance with ADB's Safeguard Policy Statement (SPS 2009). Additionally, based on the results of the climate change risk assessment, the subproject is High Risk for Multi-Hazard Index and Climate. To fulfil national regulatory requirements and ADB's SPS 2009, APGCL prepared an Environmental Impact Assessment (EIA) with environmental no-objection obtained from the Ministry of Environment, Forest and Climate Change of Government of India. In addition, APGCL developed a Resettlement and Indigenous Peoples Plan (RIPP) comprised of a Combined Resettlement and Tribal Development Plan (CRTDP) for hydropower component, and a Combined Resettlement and Indigenous Peoples Plan (CRIPP) for transmission line component.

37. The project management unit (PMU) in APGCL is responsible for overall project planning and implementation, including procurement, accounting, quality assurance, social and environmental issues, and coordination with concerned agencies. APGCL has already established its social and environment safeguards cell (SESC) in its PMU comprising 2 full time staff and is being supported by the project management consultant (PMC) with dedicated environment and social safeguards specialists. APGCL has also engage qualified and experienced external experts in a timely manner for environment and social monitoring that will not be involved in day-to-day implementation and supervision of the Project.

38. The duties of APGCL PMU include:

- (i) Conduct overall coordination, preparation, planning, and implementation of all field level activities;
- (ii) Update the EMP (see below) for review and clearance by ADB prior to any contract award;
- (iii) Implement EMPs following ADB's Safeguards Policy Statement 2009, IFCs Environment, Health and Safety general guidelines and national regulations etc. at the project site;
- (iv) Undertake and supervise compensation to the affected families based on the entitlement matrix in the CRTDP;
- (v) Oversight construction contractor(s) on monitoring and implementing mitigation measures during design, construction and operation phases of the project before contracts completed;
- (vi) Advise and coordinate to update environmental baseline surveys, finalize social survey and detailed design and update the safeguard documents (EIA/EMP and



- CRTDP) for review and clearance by ADB following detailed design and survey results;
- (vii) Engage in grievance redress and ensure the prompt resolution of complaints;
 - (viii) Set up appropriate record keeping system;
 - (ix) Disclose relevant information to the affected people and continue consultations;
 - (x) Provide training and awareness on environmental and social issues to the project staff and EPC contractor(s);
 - (xi) Preparation of semi-annual and annual environmental monitoring reports and semi-annual social monitoring reports; and
 - (xii) Liaise with the concerned ministries, authorities, and government departments for the environmental and resettlement related issues of the project implementation.

39. ADB reviews project performance against APGCLs' commitments as agreed in the CRTDP. The extent of ADB's monitoring and supervision activities will be commensurate with the project's risks and impacts. Monitoring and supervising of social and environmental safeguards are integrated into the project performance management system. ADB will monitor projects on an ongoing basis until a project completion report is issued.

3.1 COMPLIANCE WITH LEGAL AND POLICY REQUIREMENTS

40. The resettlement principles adopted for this project recognize CRTDP based on the government acts and provision in consistent to Asian Development Bank's (ADB) policies and operations manuals, in particular the Safeguard Policy Statement (2009). Approved Entitlement Matrix is provided as **Annexure-3** in the CRTDP report.

41. The land acquisition and compensation procedures of Dima Hasao and Karbi Anglong ADCs provide a comprehensive legal framework to prepare and implement resettlement plans and tribal development plans. The Project follows the CRTDP land acquisition as well as livelihood restoration and rehabilitation. In terms of land value estimation, no land transaction or revenue records are available apart from the data on leased land parcels to tribal person. Without any fair market rate available, it was estimated as per the rate provided and provided by the Autonomous District Council, and the rate was approved by the Public Works Department (PWD) of Assam for civil structures and buildings. They match most of the involuntary resettlement and indigenous people safeguard policy requirements of ADB.

3.2 COMPLIANCE WITH SOCIAL SAFEGUARD COVENANTS

42. Detailed assessment has been done in due consultation with concerned stakeholders and the CRTDP and CRIPP have been prepared for the subproject with an objective to record social, economic, and cultural aspects of the project area and its affected communities, and to present a comprehensive mitigation plan to address adverse social impacts of the project on them. A key part of the CRTDP is the strategy that enables the project-affected families (AFs) to benefit from the project, and to restore and improve their livelihoods and sources and income.

43. It outlines the institutional arrangements for delivering entitlements and project benefits



to the AFs and other stakeholders, a mechanism for resolving grievances and complaints, and a monitoring framework to follow and report the progress of the implementation of CRTDP. The CRTDP and CRIPP have been prepared in compliance with the state and national laws and regulation and ADB SPS, 2009. Considering affected families (AFs) are scheduled tribes, a series of consultations were undertaken for broad community support (BCS), and agreements were made between APGCL and two district councils indicating the BCS. APGCL has adequate budget allocation provision for land acquisition, resettlement and rehabilitation of affected families. APGCL has already established its social and environment safeguards cell in its PMU and is being supported by the project management consultant having dedicated safeguards specialists, in addition, an implementing NGO has been contracted to support the implementation of CRTDP and CRIPP. CRTDP will be updated by APGCL and the NGO prior to implementation and CRIPP will be revised after completion of final line alignment. Compensation will be provided prior to any physical and economic displacement. In the event of any unanticipated social impacts during project implementation, APGCL will take corrective actions, and update the CRTDP and CRIPP and the same will be disclosed on the ADB website. APGCL will submit semi-annual monitoring reports and external expert will monitor APGCL's implementation. The monitoring reports will be posted to ADB website and disclosed locally by APGCL.

3.3 GENDER

44. Tranche 3 is classified as Effective Gender mainstreaming (EGM). The project design integrates relevant gender focused interventions. A gender action plan (GAP) with well-defined activities, indicators, targets and timelines has been prepared to ensure that gender mainstreaming initiatives are effectively implemented. The GAP initiatives will provide opportunities for enhanced participation of women in project related staff trainings. Gender capacity building of PMU staff and contractors will help create capacities and opportunities for improved gender responsive planning and project implementation. Orientation workshop with special focus on enhancing female workforce participation, skilling, equality in wages, health, safety, hygiene and on the need to maintain sex disaggregated record of workforce will be planned for the contractors and laborers. The GAP activities will ensure women's participation in all projects related community awareness campaigns and consultations.

45. Women's participation and direct benefits will be secured across all community driven activities for community disaster resilience action plans. Disaster warning systems and mitigation strategies will integrate an inclusive approach to planning and execution. Local area development planning activities will promote gender responsive infrastructure in education and health facilities and services. Gender focused awareness campaigns in nutrition, health and menstrual hygiene will be planned and targeted towards girl students. Special measures will be taken to enhance women's participation in resettlement, rehabilitation and income restoration initiatives. Monitoring and evaluation mechanisms will track beneficiary data across all interventions in a sex disaggregated manner. Impact evaluations and social audit methodology will include gender and social parameters to be able to assess impacts from a gendered perspective. A gender monitoring consultant with support from CRTDP team and JFPR experts will be responsible to



collate data on GAP progress and report to the PMU. The PMU will provide support in reviewing and submitting quarterly progress reports on implementation of GAP.

46. The administrative monitoring mechanisms will be inclusive of socio-economic performance and sex, caste- and ethnicity disaggregated data. The record will be maintained by PMU. Adequate resources are provided for implementation and appropriate provisions made for monitoring and reporting. The Summary Poverty Reduction and Social Strategy (SPRSS) was included in the PFR report for Project 3.

47. Based on the final loan agreement the loan covenants relating to social safeguards are listed and the process and status for compliance is presented in the **Table 3-1: Status Social Safeguard Covenants** below:



Table 3-1: Status Social Safeguard Covenants

Para No	Description	Compliance Status	Remark
Article IV Section 4.02	The borrower shall enable ADB's representatives to inspect the project, the Goods, Works and Services, and any relevant records and documents	Being Complied	
Schedule 5 Implementation Arrangements	Social and Environmental Safeguards Cell has been established and Social and Environmental Experts are positioned	Complied	
Schedule 5 Land Acquisition and Involuntary Resettlement Para 6	(a) All applicable laws and regulations of the Borrower and the State relating to land acquisition and IR; (b) The IR safeguards; and (c) Measures and requirements set forth in the RIPP/CRTDP, and any corrective or preventive action set forth in the safeguards monitoring report.	Being Complied Being Complied Being Complied	Land has been acquired for the project as per provisions of the Schedule VI of the constitution of India.
Schedule 5 Land Acquisition and Involuntary Resettlement Para 7	Without limitation the applications of the IR safeguards or the RIPP, the Borrower shall ensure, or cause the EA to ensure, that no physical or economic displacement takes place in connection with the project until: (a) Compensation and other entitlements have been provided to affected families in accordance with the RIPP; and	Being Complied	The land and assets compensation has been paid in 2018. However, the other entitlements are yet to be paid. Micro plan has been prepared based on the socio-economic data collected by NGO.



Para No	Description	Compliance Status	Remark
	(b) A comprehensive income and livelihood restoration program has been established in accordance with the CRTDP.	Yet to be Complied	NGO has been directed to prepare and submit the Livelihood Restoration Program.
Schedule 5 Land Acquisition and Involuntary Resettlement Para 8	The Borrower shall ensure, or cause the EA to ensure, that the preparation, design, construction, implementation and operation of the project and all project facilities comply with (a) All applicable laws and regulations of the borrower and the State relating to indigenous peoples; (b) The indigenous peoples safeguards; and (c) All measures and requirements set forth in the RIPP, and any corrective or preventive action set forth in a safeguard monitoring report.	Being Complied Being Complied Being Complied	Instead RIPP, the Combined Resettlement and Tribal Development Plan has been prepared and being implemented through the NGO engaged.
Schedule 5 Safeguards Monitoring and Reporting Para 11	The Borrower shall ensure, or cause the EA to ensure, that the following: (a) Submit semi-annual Safeguards Monitoring Reports to ADB, and disclose relevant information from such reports to affected families promptly upon submission; (b) If any unanticipated environmental and/or social risks and impacts arise during construction, implementation or operation of the project that were not considered in the EIA, EMP, RIPP, RF or the IPPF, as applicable, promptly inform ADB of the occurrence of such risks or impacts, with detailed description of the event and	Being Complied Being Complied	



Para No	Description	Compliance Status	Remark
	proposed corrective action plan; and (c) Report any breach of compliance with the measures and requirements set forth in the EMP, or CRTDP promptly after becoming aware of the breach.	Being Complied	
Schedule 5 Labour Standards, Health and Safety Para 13	The Borrowers shall ensue or cause the EA to ensure that Works contracts under the Project follow all applicable labour laws of the Borrower and the State and that these further include provisions to the effect that contractors; (a) Carry out HIV/AIDS awareness programs for labour and disseminate information at worksites on risk of sexually transmitted diseases and HIVE/AIDS as part of health and safety measures for those employed during construction; (b) Follow and implement all statutory provisions on labour (including not employing or using children as labour, equal pay for equal work), health, safety, welfare, sanitation, and working conditions. Such contracts shall also include clauses for termination in case of any breach of the stated provisions by the contractors;	Being Complied to be Complied	
Schedule 5 Gender Para 14	The Borrowers shall ensue or cause the EA to ensure that (i) The GAP and consultation and participation plan for the Project as included in the PAM is implemented in accordance with its terms; (ii) The bidding documents and contracts include relevant	to be Complied Complied	Timeline has been prepared and NGO will undertake necessary consultation and trainings.



Para No	Description	Compliance Status	Remark
	<p>provision for contractors to comply with the measures set forth in the GAP; and</p> <p>(iii) Adequate resources are allocated for implementation of the GAP, and</p> <p>(iv) Progress on implementation of the GAP, including progress toward achieving key gender and output targets, are regularly monitored, and reported to ADB.</p>	<p>to be complied</p> <p>to be Complied</p>	
Schedule 5 Communications and participation Para 15	The Borrowers shall ensure or cause the EA to ensure that the project is undertaken in conformity with the community awareness and participation plan as agreed between ADB, the Borrower, the State and the EA as referred in the PAM	to be Complied	
JFPR Grant Para 26	The Borrowers shall ensure or cause the EA to ensure that the Grant provided under the JFPR Grant and related output to be developed from such assistance in completed on a timely basis in consultation with the ADB	The consultant is Yet to be contracted	



3.4 COMPLIANCE WITH COMBINE RESTTLEMENT AND TRIBAL DEVELOPMENT PLAN REQUIREMENTS

48. The LKHEP lies in the Dima Hasao and the Karbi Anglong Autonomous Districts Councils of the Assam State in India. The lands that fall within the jurisdiction of the two districts are 'scheduled'¹ or listed tribal land and those who belong to the listed tribes are 'scheduled tribes. The following **Table 3-2: Summary of Project Impacts** presents, the detail of Project affects villages under the jurisdiction of two autonomous districts (Dima Hasao 15 villages and Karbi Anglong 2 villages). Socio-economic survey in Karbi Anglong District is yet to be initiated.

Table 3-2: Summary of Project Impacts

Sl. No	Name of village	Affected Family	Total Land (in Ha.)	Total structures affected ²
1	District Dima Hasao	955	909	122
2	District Karbi Anglong	231*	145	0
Total		1186	1054	122

*231 land/Properties yet to finalised as project affected families.

Source: census and socio-economic survey conducted by the NGO, Karbi Anglong Socio-economic data yet to be updated.

3.4.1 Land Requirement for Various Project Components

49. 120 MW LKHEP project required 1577 hectares of land for all components in both the autonomous district i.e., Dima Hasao and the Karbi Anglong. Out of 1577 ha total land 523 ha is forest and 1054 ha is revenue land. The below **Table 3-3: Land Area Required for the Project** presents the planning and implementation stage land requirements.

Table 3-3: Land Area Required for the Project Components

Sl. No	Name of village	In DPR stage (Ha)	Remarks
1	Project infrastructure (powerhouse, dam, and key installations)	355	
2	Reservoir	552	
3	Roads, buildings, and project facilities	72	
4	Relocation site for 14 physically displaced HHs and the project township	75	
5	Land for other purposes (recreational facilities, helipad etc)	523	
Sub total		1577	

Source: CRTDP, data likely to be updated once provided by technical team/contractor.

3.4.2 Scope and Type of Land for Project Components

50. The scope of land acquisition has remained same as planned earlier and **Table 3-4: Scope and Type of Land for Project Components** below present the type of land in both the district which

¹ The Schedule VI of the Constitution of India established several ADCs in the northeast India. An ADC is an administrative entity with a structure to safeguard tribal peoples' rights and interests and their traditional ways of living. It also provides a political framework, guaranteed by the Constitution of India, for tribal peoples to self-govern their affairs.



have been acquired.

51. Total 109.75 crores have been paid to the forest department for forest land diversion and other requirements. Compensation for revenue land has also been fully paid in the Dima Hasao district and in Karbi Anglong compensation payment is in progress and the final status of disbursement will be updated in next SMR.

Table 3-4: Scope and Type of Land for Project Components

Sl. No	Autonomous District	In planning stage (Ha)	Implementation stage	Total
1	Dima Hasao	478	909	1387
2	Karbi Anglong	45	145	190
Sub total		523	1054	1577

Source: CRTDP report.

3.4.3 Loss of Crops and Trees

52. The loss of crops and trees were assessed during planning stage and captured in CRTDP report and accordingly the estimated amount was taken in R&R budget. However, during payment of land, amount of crop, trees and other assets were taken into consideration. The below **Table 3-5: Type of trees and crops impacted** presents the number of trees and crops which have been compensated in implementation stage. Compilation of Zirat (loss of crop, trees etc) are being undertaken by NGO and same shall be updated in the next SMR.

Table 3-5: Type of trees and crops impacted

Sl. No	Category of trees	Number during planning stage
1	Fruit bearing	5858
2	Fodder	75320
3	Fuel wood	5750
4	Timber	11618
Sub total		98546

Source: CRTDP and census and socio-economic survey conducted by the NGO.

3.4.4 Loss of common/government properties

53. Apart from the private land and structures, 7 government/structure is also affected. The compensation for the same has been paid. Summary of the government/community properties are provided in the **Table 3-6: Details of Village wise government/community properties in District Dima Hasao** below. There was no such type of impact in Karbi Anglong district.

Table 3-6: Details of Village wise government/community properties in District Dima Hasao

Sl. No.	Name of Govt./Community Property	Remarks
1	Irrigation Office Building	Government
2	Secretary (Garampani LAMP Cooperative land)	Garampani LAMP Cooperative
3	Gram Sewak Quarter	Government
4	Rural Bank	Government
5	PHE Pump House	Government



Sl. No.	Name of Govt./Community Property	Remarks
6	Balendra warisa (S.M.E School)	President of S.M.E School is the caretaker
7	The Secretary of Karbi Community Hall of Longku Area	Bidyasing Engti Longku is the caretaker

Source: CRTDP and census and socio-economic survey conducted by the NGO.

3.4.5 Impacts on structures

54. As per the initial assessment jointly done by APGCL and the revenue departments, during planning stage total 18 structures were identified as fully impacted and 6 partially in the Dima Hasao district. During Socio-economic and census survey NGO was able to establish contact with the owners of 14 fully affected house owners. Hence owners of 14 structures were identified for further relocation process. **Table 3-7: Summary of structures verified by NGO** below presents summary of the impact on displaced structures.

Table 3-7: Summary of structures verified by NGO

Sl. No	Name of village	No of Land/ structure holders
1	Borolangklam	0
2	Borolangku	15
3	Chotolangku	4
4	Chotolangpher	2
5	Degremdisa	0
6	Dimalangku	31
7	Disabra	20
8	Krungmenglangso	0
9	Longku-II	20
10	Lorulangso	2
11	Mungkele	1
12	Rongkhelan	1
13	Sokpuru	14
14	Tortelangso	11
15	Waperdisa	1
Sub total		122

Source: Socio-economic survey conducted by the NGO based on the JVS assessment.

55. Apart from the identified list of CRTDP, some AFs has raised grievances regarding the non-inclusion of their structures/properties in identified list of fully impacted structures. Though boundary pillars have been fixed on some locations actual submergence area is yet to be demarcated on ground for determining actual physical impacts due to submergence and requiring relocation. All the grievances are pending at respective council's offices, follow-up is being done by SESC on regular basis to resolve the grievance.

3.5 SUMMARY OF IMPACTS

56. All impacts due to the project have been summarised in **Table 3-8: Summary of Impacts**. It's



also providing the planning and implementation stages variations, if any.

Table 3-8: Summary of Impacts

SL. No.	Particulars	Unit	Quantity	
			in CRTDP	in implementation
1	Affected Autonomous District Council	Number	2	2
2	Affected Villages	Number	16	17
3	Total Land Requirement	hectare	1577	1577
4	Total Revenue Land	hectare	1054	1054
5	Total Forest Land	hectare	523	523
6	Total Crop Land	hectare	1054	1054
7	Total Trees	Number	98546	4227 ³
8	Total Primary Structures (Physically Displaced)	Number	18	Yet to be finalize
9	Total Other Structures (Secondary/Cattle sheds)	Number	18	Yet to be finalize
10	Total Partially Affected Structures	Number	6	Yet to be finalize
11	Total Affected Families ⁴	Number	1217	1170
13	Total Physically Displaced Families and Affected Persons	Number	18 AFs and 85 APs	Yet to be finalized
14	Total Economically Displaced Families and Affected Persons at Dima Hasao	Number	983 AFs and 4609 APs	955
15	Total Economically Displaced Families and Affected Persons at Karbi Anglong	Number	231 AFs	215*

Source: CRTDP and census and socio-economic survey conducted by the NGO. *Certification from KAAC is yet to be obtained for (86+103=189 already certified by KAAC) 215-189=26 AFs.

3.6 STATUS OF PAYMENTS OF COMPENSATION, ALLOWANCES AND ASSISTANCE

57. The loss of land the assets over the land like structures, crops and trees were assessed and compensation paid as per the agreed land rates with ADC and land holders. Compensation of assets were evaluated by the PWD, agriculture and horticulture etc department. The below **Table 3-9: Status of Payments of Compensation (Land including Zirat)** presents the compensation paid to AFs by APGCL and concerned ADCs.

58. The applicable R&R assistance and allowances would be done after completion of Socio-economic survey for all AFs and microplan will be prepared. Accordingly, progress would be included in the semi-annual social monitoring report.

Table 3-9: Status of Payments of Compensation (Land including Zirat)

Sl. No	Autonomous District	Total Land	Total Land (Ha)	Compensation (crores)	Remarks
1	Dima Hasao	Revenue	909.00	44.57	
		Forest	477.77	109.75	
2	Karbi Anglong	Forest	45.28		
		Revenue	145.00	8.11	

³ The final numbers are yet to be updated after cutting trees in reservoir /submerging area

⁴ Dima Hasao 955 + Karbi Anglong 215 = Total 1170 (Figure is based on the compensation disbursement list provided by Joint Secretary, KAAC w.r.t. Karbi Anglong)



Sl. No	Autonomous District	Total Land	Total Land (Ha)	Compensation (crores)	Remarks
	Sub total		1577.05	162.43	

Source: APGCL and ADC's payment documents.

59. The compensation of land and affected properties has been paid in both the districts. Based on the socio-economic data obtained by NGO through the ground survey, the R&R assistances and allowances have been calculated. As some delay had occurred in paying land and asset compensation in Karbi Anglong, the survey has not been conducted in 2 villages. Hence, the draft micro plan has only been prepared for Dima Hasao district for total 15 villages. The 60 AFs who were not found during survey are treated as absentee and have not been included in the budget. However, after disclosure of microplan if absentee AFs come forward for claim, supplementary microplan shall be prepared.

3.7 RESTTLEMENT SITE DEVELOPMENT- IDENTIFICATION OF AREA

60. As per CRTDP, total 18 numbers of residential properties were identified to be relocated. However, after considering the Zirat joint assessments sheets, it's found that total 122 properties need to be reassessed for relocation. In this regard, Hon'ble Chairman issued an instruction to get the resettlement site identified and consent from all the displaced persons need to be obtained. Accordingly, PMC were requested to identify an appropriate site for relocation and with the help of civil contractor, the contour survey and estimated plan would be developed.

61. After several discussion with GM Lanka, APGCL, PMC along with Social Safeguard Expert, APGCL, it was decided that the area where a model house (constructed for displaced person) has constructed would be fit for relocation site. Its opposite to PR-8 and falls in Disabra village area. The land has been physically handed over to APGCL by the Dima Hasao Council.

62. Contour survey for resettlement site for displaced APs has been completed. Draft Layout plan has also been submitted to PD, APGCL & GM, Lanka for review and approval. A meeting has also been scheduled on 1st July 22 to finalise the list of displaced APs.

CHAPTER 4. GRIEVANCE REDRESSAL MECHANISM

63. It would be pertinent to refer the Asian Development Bank's policy, which requires proper mechanisms for resolution of disputes that may arise from any aspect of the project and development process. The mechanisms should be "affordable and accessible," and third parties independent of the implementers should be available at the appropriate point in the process. The grievance procedure needs to be simple, administered in the first instance at the local project level to facilitate access, flexibility and open to various proofs considering the need for speedy, just and fair resolution of any grievances.

64. The detailed description of the grievance redress mechanism (GRM) has been provided in CRTDP. The purpose of the GRM will be to receive and facilitate the resolution of affected people's concerns, complaints, and grievances about the social and environmental performance at the project level. The GRM will aim to provide a time-bound and transparent mechanism to voice and to resolve social and environmental concerns linked with the project. The project-specific GRM is not intended to bypass the government's own redress process but to address project-affected people's concerns and complaints promptly, making the GRM readily accessible to all segments of affected persons and scaled to the risks and impacts of the project. Hence, depending on the nature and significance of the grievances or complaints, the GRM will comprise procedures to address grievances at the project site, and at the PMU level. More serious complaints that cannot be addressed at the project level will be forwarded to the PMU grievance redress committee. The GRM will not deal with matters pending in a court of law. However, complainants may access the formal legal system at any time.

4.1 GRIEVANCE REDRESS PROCESS

65. A three-tier grievance redress mechanism has already been notified for handling grievances. The first tier is the grassroots level mechanism. Grievances of the AFs are first dealt with by Gaon Buras in consultation with the field officials, and the contractors of the project. Complaints that cannot be addressed at the level of Gaon Buras will be forwarded to the Project level grievance redress committee (GRC) which is the second tier. The third tier is the appellate GRC at the state level. APGCL will deal with the complaints and grievances as the appellate GRC. The presence of GRM or seeking relief from GRM is not a bar to take grievances and complaints to national courts for arbitration.

4.2 OTHER PATHS TO REDRESS GRIEVANCES

66. There are three other supplementary paths that are opened for the AFs to resolve their problems, complaints, and grievances with regard to the project and its implementation:

- (i) ADB India Resident Mission in New Delhi.
- (ii) ADB Accountability Mechanism; and
- (iii) India's Courts System.

4.3 CONSITUTION OF GRC



67. GRM has been constituted and notified, the same has been disclosed among AFs and all the members/representatives of the committee in writing. The office order has been issued on 17th June 2020 vide No.-APGCL/LKHEP/PD/2017-18/21/Part-I/45.

68. Along with a minor modification of the above office order, following **Table 4-1: Grievance Redressal Committees** is presenting the details of GRM, Roles and responsibilities of the GRC's and timeline for resolution. The copy of modified order is provided as Annexure-2a

Table 4-1: Grievance Redressal Committees

Members	Designation		Responsibility
First tier of GRC			
Site Engineer of APGCL	Deputy Manager (Civil)		<ul style="list-style-type: none"> ➤ Will receive grievances ➤ Resolution within 15 days of time ➤ In case complaints and grievances not resolved, forward to the Second Tire
Site Engineer of Civil & Hydro-mechanical contractor & Electro-Mechanical Contractor	Not yet notified		
Gaon Buras ⁵ of Affected Villages	Dima Hasao District: 1) Borolangklam 2) Borolangku 3) Chotolangku 4) Chotolangpher 5) Degremdisa 6) Dimalangku 7) Disabra 8) Krungmenglangso 9) Longku-II	10) Lorulangso 11) Mungkele 12) Rongkhelan 13) Sokpuru 14) Tortelangso 15) Waperdisa Dima Hasao District: 1) Cherimthepi 2) Langsomepi	
Second Tier of GRC			
Chairman	General Manager, Civil (PMU)		

⁵ Assam Cabinet announced that Gaon Buras, village-level functionaries of the district administration, will be called 'Gaon Pradhans'.

- The government has reasoned that a number of young men (and women) become Gaon Buras, and thus, the word 'Bura' (meaning old in Assamese) is no longer appropriate.
- Gaon Buras are the village headmen. They are the eyes, nose, ear of the district administration at the village level.
- There are about 6,000 Gaon Buras in Assam. Women 'Gaon Buras' are not very common, and they take over, if their husbands die.

History:

- It belongs to the colonial era, when the British appointed the oldest person in the village as the head, who would oversee matters relating to land and revenue in a particular area.
- Post-independence, the government continued with the institution and made the Gaon Bura a formal part of the Assam Revenue and Disaster Management department, increasing his responsibilities, and eventually introducing a small honorarium for the role.
- In Arunachal Pradesh, too, the Gaon Buras (and Buris) are the most important village-level functionaries.

Duties:

- Maintaining a population register of the village, maintaining land records, helping police investigate crime, etc.
- It involves now maintaining a log of Covid-19 cases in the village, organising vaccination camps, functioning as booth-level officers during elections etc.
- To issue a 'Gaon Bura certificate', a certificate that determines the permanent residency in a particular village.



Members	Designation	Responsibility
Member	Secretary, Revenue, North Cachar Hills Autonomous Council, Haflong, Dima Hasao District	<ul style="list-style-type: none"> ➤ Member Secretary Will receive grievances ➤ Empowered to call the representatives from PAPA and Gaon Buras ➤ Decision will be communicated in writing to aggrieved person ➤ Timeframe for resolve the grievance will be 45 days from receipt of the grievance ➤ In case complaints and grievances not resolved, forward to the Third Tire
Member	Secretary, Revenue, Karbi Anglong Autonomous Council, Diphu, Karbi Anglong District	
Member-Secretary	Deputy General Manager, Civil (PMU), O/o the Chief General Manager (PP&I), APGCL	
Member	Deputy General Manager, (Civil), O/o the General Manager, LKHEP, APGCL, Longku	
Member	Assistant General Manager (Civil), Lower Kopili Construction Division, APGCL, Lanka	
Member	Environment and Social Expert, LKHEP APGCL Bijulee Bhawan, Guwahati	
Member	Contractor's Representative	
Member	Project Affected Peoples Association's Representative	
Member	Women's Representative	
Third Tier of GRC		
Chairman	Chief General Manager, (PP&I) APGCL Bijulee Bhawan, Guwahati	<ul style="list-style-type: none"> ➤ The Chairman may call the representatives from PAPA, Gaon Buras and survey department ➤ Decision will be communicated in writing to aggrieved person ➤ Timeframe for resolve the grievance will be 90 days from receipt of the grievance.
Member	Secretary to the Govt. of Assam, Revenue & Disaster Management Department, Dispur Guwahati (representative of the state revenue department)	
Member Secretary	General Manager (Project), O/o the CGM (PP&I) APGCL Bijulee Bhawan, Guwahati	
Member	Deputy General Manager (PMU), O/o the CGM (PP&I) APGCL Bijulee Bhawan, Guwahati	
Member	Representatives of both Dima Hasao and Karbi Anglong District Autonomous Councils	
Member	Representative of Project Affected Peoples Association's	

4.4 PRESENT STATUS OF GRIEVANCES IN DIMA HASAO DISTRICT

69. Since GRC has been notified and disclosed among the AFs, till December 2021 total 402 grievances have been lodged/received. The summary of grievances is provided in **Table 4-2: Summary of Grievances Received** below. Mostly the grievances are related to compensation for land and assets, followed by new claimants from owners due to inter/intra village migration and delayed implementation of the CRTDP. Delay in R&R assistance and allowances also accounted for majority of complaints. APGCL is continue following up with Secretary, Revenue Dima Hasao to call a GRC



meeting at the earliest to resolve the grievances.

Table 4-2: Summary of Grievances Received

Sl. No	Name of village	No of Land/ structure holders	No of Grievances	Type of Grievances
District Dima Hasao				
1	Borolangklam	116	13	➤ Compensation of Land and Assets ➤ Compensation Commercial Pan Shop ➤ Compensation of Structure and plot at Relocation Site ➤ Compensation of Land (Fishery) ➤ Disbursement of Compensation and assistances
2	Borolangku	183	109	
3	Chotolangku	15	36	
4	Chotolangpher	30	21	
5	Degremdisa	64	8	
6	Dimalangku	42	13	
7	Disabra	179	8	
8	Krungmenglangso	22	17	
9	Longku-II	46	37	
10	Lorulangso	31	34	
11	Mungkele	119	45	
12	Rongkhelan	2	14	
13	Sokpuru	36	10	
14	Tortelangso	67	36	
15	Waperdisa	3	1	
Sub total		955	402	

70. Compensation for land for two affected villages of Karbi Anglong was concluded in December 2021 and socio-economic survey did not commence during the reporting period and once NGO takes up the socio-economic activities, awareness on GRC will be initiated.

4.4.1 GRC RECORD-KEEPING:

71. Records of all grievances received, including contact details of the complainants, dates the complaints received, nature of grievances, agreed corrective actions and when they were implemented, and the outcome are recorded and kept in the project office. The number of grievances recorded and resolved, and the outcomes will be displayed/disclosed at the project office, APGCL Office in Guwahati, and on APGCL website. A summary of this information will be included in the monthly progress report of NGOs and semi-annual safeguard monitoring reports submitted to ADB. All GRC meeting deliberations and decisions will be recorded and will be available for public reference. If ADB involves in grievance resolution, it will maintain records of its proceedings and disclose them to all parties engaged in the hearings.

4.4.2 GRM COSTS

72. All costs incurred in GRC meetings, consultations, communication, and reporting/information dissemination will be borne by PMU. Cost estimates for grievance redress are included in resettlement cost estimates. ADB will bear the cost of its own involvement in grievance resolution. The complainants are not charged any fee for the service. It is a good practice



to provide the AFs with transport facilities to the project offices or cash payment for such expenses by the project, if feasible.

4.4.3 MEETINGS OF GRC

73. The GRCs will meet according to a published timetable. This information will be disseminated among all the AFs, ADCs, and PAPA. Each session/meeting will be held at a place which is convenient for the AFs to attend. The GRC procedures will be communicated through public notices and at the community meetings. The AFs will be made aware of the presence of GRM, its powers, and benefits during consultations and group discussions. At such gatherings, the AFs will be encouraged to discuss their views on the structure and functions of GRM.

CHAPTER 5. STAKEHOLDER ENGAGEMENT

5.1 STAKEHOLDER ENGAGEMENT PROCESS

74. Community consultation and engagement in planning and implementation of LKHEP is playing a key role in smooth project progress. Consultation is continuous process and will be continued throughout the project period. A stakeholder communication strategy was prepared for the project during preparation of CRTDP.

75. The consultation process has used different types of consultation such as in-depth interviews with key informants, focus group discussions, and individual consultations. As part of the consultation process and understanding of different gender perspectives on the proposed project, project-affected women were given an opportunity to voice their views on the project. They were also encouraged to (i) recommend actions that would ensure they too benefit from the Project; and (ii) suggest how to minimize harmful project impacts, if any, on them. Group level gender consultations were also carried out especially, to learn their views regarding income restoration, local area development including the development of health and education facilities in the Project area.

76. For Implementation of Combined Resettlement and Tribal Development Plan of Lower Kopili H.E. Project in Dima Hasao and Karbi Anglong districts of Assam M/s. Consultants for Rural Area Development Linked Economy (CRADLE) JV with Gramya Unnayan Santha, address & Contact No. C/258, Road No. 1C, Ashok Nagar, Ranchi-834002, Jharkhand Tel. No. 0651-2243102 has been engaged. The contract was signed on 13.11.2019 and the NGO commenced field work from 28.11.2019. The completion date as per the contract will be 27.11.2023.

5.2 CONSULTATIONS CONDUCTED DURING CRTDP PREPARATION

77. During the period between November 2014 and February 2017, the social and environmental safeguard consultants of the project team attended six public consultations organized by APGCL at the proposed project site. APGCL officially notified all stakeholders regarding the place, time, and the venue of such consultations. In these consultations, gaon Buras, General Secretary, President and representatives of PAPA, President of the Assam Democratic Student union (NGO), General Secretary of the Karbi Student Union (NGO), representatives of the Dima Hasao ADC, officials of the Forest Department, and APGCL, and social and environment consultants of the project team were participated.

78. It was agreed that a public consultation and disclosure plan will be formulated and used by the project management unit (PMU) of the project and draft plan was developed as **Table 5-1: Format for Public Consultation and Disclosure Plan** below.

Table 5-1: Format for Public Consultation and Disclosure Plan

Activity	Issues to Discuss	When	Agencies Responsible	Remarks
Consultations with the AFs on land acquisition, compensation and	Discuss with the AFs and other stakeholders (a) their entitlements, (b) compensation rates, and	(a) Pre-project (b) Project planning, (c) Project implementation	PMU/ SESC/ NGO/ LKHEPPAPA	Consultation with community is being



Activity	Issues to Discuss	When	Agencies Responsible	Remarks
Jirat rates, compensation payment – their timelines of delivery.	(c) the grievance redress mechanisms.	phases		conducted by NGO
Consultations on resettlement and rehabilitation of affected Families	Discuss (a) entitlements, (b) time frame of compensation payment, and (c) moving to the resettlement site, (d) livelihood restoration and improvement program	TBD	PMU/SESC/NGO/ PAPA	Consultation with community has been conducted by NGO and PMC
Consultative meetings on mitigation measures	Any unforeseen impact during implementation	When needed	PMU/ SESC/NGO/ PAPA	
Project information dissemination	Distribution of project information leaflets/booklets to all AFs	Intermittent	PMU/ SESC/NGO/ PAPA	
Public notification	Publish a list of affected lands / sites in local newspapers. Project commencement details and its progress details will also be publicized	TBD	PMU/SESC/ADCs	
Distribution of key project information and summary of CRTDP among all AFs and stakeholders	Distribute leaflets or booklets in local language on the project, land acquisition, compensation and livelihood restoration and improvement	TBD	PMU/SESC/NGO /PAPA	
Full disclosure of CRTDP to the AFs	Distribute summary CRTDP in local language to all AFs	TBD	PMU/SESC/NGO /PAPA	
Web disclosure of CRTDP	Posting of draft and final copies of the CRTDP on ADB and EA websites	TBD	APGCL/ADB	

5.3 CONSULTATIONS DURING CRTDP IMPLEMENTATION

79. Social and Resettlement Expert, PMC and CRTDP implementation NGO are meeting regularly with PMU and SESC officials. Social and Environmental Expert from PMU are also visiting the project site as and when needed. The meetings details are provided in the table. In follow-up of the CRTDP implementation, consultation with local community, Gaon Buras, School teachers, women groups, health workers have also been conducted. Issues discussed and suggestion are briefed in the following **Table 5-2: Consultation with various stakeholders and Affected Community**, the MoMs and summary provided by NGO are attached with Report as Annexure-4. Glimpse of



meetings are presented in Figure 3: Glimpses of Consultations with DPs and APGCL, PMC.

Table 5-2: Consultation with various stakeholders and Affected Community

Sl. No.	Date	Venue/ location	Name of the Officials/Person attended	Issues discussed
1	8th, 9th, 10th & 11th February 2022	APGCL HQ, Bijulee Bhawan, Guwahati and Longku	Meeting with External Monitor	<ul style="list-style-type: none"> ➤ Overall discussion of the Social and Environmental ➤ Overall discussion of the Social and Environmental aspects, CRTDP implementation, GAP and Stakeholders progress, livelihood plan etc.
2	20th February 2022	APGCL HQ, Bijulee Bhawan, Guwahati	Meeting with NGO by Social and resettlement Expert	<ul style="list-style-type: none"> ➤ As the Socio-economic survey was not yet initiated in Karbi Anglong side due to unavailability of payment list ➤ NGO requested to please provide the same at the earliest possible to avoid delay
3	21st February 2022	APGCL HQ, Bijulee Bhawan, Guwahati	Meeting with Project Director and GM, APGCL	<ul style="list-style-type: none"> ➤ After discussion with KAADC, it was told to visit Diphu and collect the necessary list of APs and other permission to conduct the survey
4	24th February 2022	Diphu, KAADC	Meeting with Joint Secretary, Karbi Anglong Autonomous District council along with ADB Staff Consultant, PMC and NGO organised by APGCL	<ul style="list-style-type: none"> ➤ The main agenda of this meeting was to discussion on the land compensation payment and list of APs (paid) ➤ ADB's Social Consultant joined to visit the Diphu for discussion and request to Secretary Revenue to please provide the list of APs and permission to visit and consult the APs for Socio-economic survey ➤ Obtaining the permission for conducting the Base line socio economic survey of the APs ➤ Consultation with Sarkari Gaon Buras ➤ And other relevant issued



Sl. No.	Date	Venue/ location	Name of the Officials/Person attended	Issues discussed
5	March 22	APGCL HQ, Bijulee Bhawan, Guwahati	Meeting with CRTDP implementation NGO and Social Expert, APGCL on various implementation issues.	➤ Discussion regarding the NOC from KAAC Diphu and action plan for completion of Socio-economic survey to be done for 2 villages of Karbi Anglong. (Left bank of Kopili)
6	09th March 2022	APGCL HQ, Bijulee Bhawan, Guwahati	All stakeholders	<ul style="list-style-type: none"> ➤ Detailed review for all the aspects ➤ Progress and challenges ➤ Way forward

Figure 3: Glimpses of Consultations with DPs and APGCL, PMC



Meeting with NGO, PAPA and GM Lanka on the CRTDP implementation/progress



Meeting with External Monitoring Consultant



Meeting with Revenue Secretary, Karbi Anglong at Diphu



Meeting with NGO and social expert APGCL



Comprehensive review meeting at APGCL HO, Bijulee Bhawan Guwahati

5.4 COMMUNITY MEETINGS CONDUCTED BY THE CRTDP IMPLEMENTING NGO

80. Apart from the GRC, Stakeholder meetings, NGO has also conducted the community consultation presented in **Table 5-3: Consultation/meetings conducted by NGO** among the community in process of CRTDP implementation. Still photos captured and provided by the NGO in the meeting are provided in Figure 4: Consultation/meetings conducted by NG. The detailed summary report, attendance sheets and MoMs are attached as Annexure-4.

Table 5-3: Consultation/meetings conducted by NGO

Sl. No.	Date	Venue/ location	Name of the Officials/Person attended	Issues discussed
1	9th of April 2022	At Rongtarme village under Langsomepi revenue village, West Karbi Anglong,	APGCL, PMC, NGO, Gaon Buras, LKHEPPAPA Officials and local community	<ul style="list-style-type: none"> ➤ Meeting with President and Secretary of PAPA, Mr. Pankaj Hazarika (Social Consultant AGPGCL), Social and Resettlement Expert, PMC, Village Headman and Villagers.
2	6 th of April 2022	At Cherimthepi revenue village, West Karbi Anglong,	APGCL, PMC, NGO, Gaon Buras, LKHEPPAPA Officials and local community	<ul style="list-style-type: none"> ➤ To start Socio economic survey started for the PAFs. ➤ Grievance record mechanism, ➤ importance of the Census and Socio-Economic survey and the expected outcome of the survey ➤ data, information, required documents to be produced during survey. ➤ Some notable PAPs presented the requirement of the village for their development such as drinking water, road connectivity, community hall, School building and livelihood development activities which was presented before the APGCL earlier



Figure 4: Consultation/meetings conducted by NGO



Mr. Kennedy Enghi, Chairman/Secretary PAPA Welcome address & Object of the Meeting & Mr. Sangram Singh, PMC addressing the Meeting 9th of April 2022



Group Photo of all Participants, 9th of April 2022

Photo of all Participants, 6th of April 2022

5.5 CAPACITY BUILDING TRAINING

81. In compliance of the approved gender action plan, Output 2: Institutional Capacity of APGCL Strengthened Activity 2.2 Organize annual training of PMU and other staff on gender mainstreaming, prevention of sexual harassment at workplace, GAP monitoring requirements, sub-activity 2.2.1 training conducted every year (30 staff including 6 women staff trained), a pre informed annual training has been conducted by Social & Resettlement and Environmental Expert of PMC. In this regard, an invitation email with virtual link was communicated from Team Leader PMC to Project Director, General Manager APGCL and other participants. The venue of training was project location at Longku, however, a virtual link of the same was generated and circulated among the participants located at APGCL HQ at Guwahati.

82. A power point presentation presented among the participants covering (i) Involuntary Resettlement- Safeguards Requirement, (ii) Involuntary Resettlement- Management & Implementation, (iii) Involuntary Resettlement- Safeguards Monitoring and (iv) Gender Action Plan (GAP) implementation covering gender mainstreaming, prevention of sexual harassment at workplace, GAP monitoring requirements.

83. Apart from above, Occupational Health and Safety- Environmentally Sound Construction Site Management power point presentation was also shared among the participants. Best practices in construction in funding projects were shown. Compliance monitoring as per Environment Management Plan were also presented and discussed.

84. A feedback form was circulated among the participants and summary captured. In overall as this is the first training to the present engineers and staff of APGCL, junior officers were eager



to know more about the procedures and guidelines so that 100% compliance would be ensured. Out off all feedback forms, 5 officials were in a view that there will no further meetings required.

85. The following **Table 5-4: Institutional Capacity of APGCL Strengthened**, presents about the training, a short report along with the attendance and feedback form is provided with Report as Annexure-6.

Table 5-4: Institutional Capacity of APGCL Strengthened

Sl. No.	Date	Venue/ location	Name of the Officials/Person attended
1	28 th June 2022	Project site, Longku	APGCL Staff from Longku & Guwahati HQ (virtual)

CHAPTER 6. SUMMARY OF MONITORING RESULTS & KEY FINDINGS

86. In order to verify the IR Impacts, during the project implementation, site visits and consultative inspections in the project areas have been monitored by the PIU/PMU with the help of PMC.

6.1 WAY FORWARD

87. The CRTDP implementation is in progress and compensation related to land has been paid to the affected land holders, while R&R assistance are under process. Regular site visits are being conducted by PMU officials of APGCL, Social and Resettlement Expert of PMC, Team Leader & Social Expert from the CRTDP implementation NGO has been requested to stationed at site. Consultation and grievance redressal should be regular monitored.

88. The key observations of the monitoring on the social safeguards implementation in general are summarised as follows:

- Total 122 properties noted in joint assessment sheet and after ground verification/reassessment, further activities like identification of resettlement site, consultation for consent for relocation etc in consultation with PAPA President and concerned affected structure owners.
- Total 955 Affected families retain 1369 land properties have been entitled for R&R & and seven common/government properties are also identified for relocation.
- Institutional arrangements followed the guidelines of CRTDP and SESC has been established, Environmental and Social Safeguard Expert are positioned. For day-to-day monitoring, PMC has parallels setup and Social & Resettlement Expert, and Environmental Experts are mobilised.
- During the monitoring period community consultations has not been organised. Public Consultation meeting at the all the villages along the project road needs to organise.
- Grievance Redressal Mechanism has been established and functional GRC at all the level has been constituted. There is a minor modification has been done in the constitution of GRC, the copy of modified order is provided as Annexure-2a.
- Total 402 nos of grievance have been noted and forwarded to Council for verification. Accordingly, 29th June 2022, a Tier -II, GRC meeting conducted and total 231 grievances found that, the aggrieved person/family has been received land compensation. Whereas 12 aggrieved families found that their land has not falls under the handed over area by council to APGCL. total 243 grievances closed and 159 again submitted to Dima Hasao Autonomous District Council for the spot verification as stated by the Council's Lot Patowari.
- For general grievances, complaint registers have been maintained by the NGO, APGCL, PMC and contractor. There are no complaint/grievances have been received during the monitoring period.



- NGO services should be utilised as per agreed ToR, experts and support staff need to be mobilise in full strength.
- Census and socio-economic survey should be completed in 2 villages of Karbi Anglong on priority basis.
- As the microplan of Dima Hasao district has been prepared and submitted for approval, necessary steps to be taken for expedite the approval and subsequently payments.
- There are total 14 residential APs are displaced, for them resettlement site has been identified in consultation with PAPA President and concerned affected structure owners. Apart from these, 11 APs have also made complaint to APGCL regarding the compensation and assistance with site allotment in the resettlement site, which in plan to be developed.
- Mostly the grievances lodged are related to compensation for land and assets, followed by new claimants from owners due to inter/intra village migration and delayed implementation of the CRTDP. Delay in R&R assistance and allowances also accounted for majority of complaints. APGCL is continue following up the matter with Secretary, Revenue Dima Hasao to call a GRC meeting at the earliest to resolve the grievances.
- For general grievances, complaint registers have been maintained by the APGCL, PMC and contractor at all the locations.
- Microplan of missing APs which have been filled in Dima Hasao district and the Karbi Anglong need to prepare and submitted for approval, necessary steps to be taken for expedite the approval and subsequently payments.
- Community consultation, stakeholder consultation, consultation with women groups and consultation with regards to girls for awareness about menstrual cycle, health and hygiene should be initiated and recorded.
- As external monitoring consultant is on board and have made field visits, the necessary compliance which have been suggested by them need to complete. The site which is mentioned as Archaeology near bridge at Longku Nala was noticed by the External Monitoring Consultant. The confirmation needs to be followed up with council.

Annexure 1: Notification of Appointment of Administrator at State Level

ORDER

The North Cachar Hills Autonomous Council is pleased to recommend the name of Shri Saindesh Ardao, Secretary, Revenue, N.C. Hills Autonomous Council in the equivalent rank of Deputy Collector of Revenue Department for appointment of "Administrator" for monitoring of the Rehabilitation and Resettlement Schemes for Lower Kopili Hydro Electric Project at Longku to be implemented by the Assam Power Generation Co-operation Ltd.

Sd/-
Principal Secretary (N)
N.C. Hills Autonomous Council
Haflong

Memo NO.REV/S/34/2017-2018/ 234

Dated Haflong, the 18th August'2017.

Copy to:-

1. The P.A. to the Hon'ble Chief Executive Member, N.C. Hills Autonomous Council, Haflong for favour of kind appraisal to Hon'ble C.E.M.
2. The Chairman, APGCL, Bijulee Bhawan, Paltan Bazar, Guwahati for favour of kind information.
3. The Addl. Chief Secretary, Power Govt. of Assam, Dispur, Guwahati for favour of kind information.
4. The Deputy Commissioner, Dima Hasao Haflong for favour of information.
5. The Managing Director, Bijulee Bhawan, Paltan Bazar, Guwahati for favour of kind information.
6. The Chief General Manager, Bijulee Bhawan, Paltan Bazar, Guwahati for favour of kind information.
7. Sri. S. Ardao, Secretary, Revenue, N.C. Hills Autonomous Council, Haflong for information and necessary action.
8. Office order file.

Issue No: 642-48

Dated: 18/8/17



Sd/-
Principal Secretary (N)
N.C. Hills Autonomous Council
Haflong

**KARBI ANGLONG AUTONOMOUS COUNCIL
DEPARTMENT OF POWER
KAAC SECRETARIAT
DIPHU-782460.**

No. KAAC/REV/518/2007/

Dated ____/____/2017.

ORDER

The authority of Karbi Anglong Autonomous Council is pleased to recommend the name of Shri/Smt Richard Rongpi, ACS, Under Secretary, Karbi Anglong Autonomous Council for appointment of "Administrator" for monitoring of the Rehabilitation and Resettlement Schemes for Lower Kopili Hydro Electric Project at Longku to be implemented by the Assam Power Generation Co-operation Ltd.

Sd/-
Principal Secretary
Karbi Anglong Autonomous Council
Diphu.

Memo No. KAAC/REV/518/2007/ (713) (A)


Dated ____/____/2017.

Copy to:-

1. The P.A. to the Hon'ble Chief Executive Member, Karbi Anglong Autonomous Council, Diphu for favour of kind approval to Hon'ble C.E.M.
2. The Chairman, APGCL, Bijulee Bhawan, Paltan Bazar, Guwahati for favour of kind information.
3. The Addl. Chief Secretary, Power Govt. of Assam, Dispo. Guwahati for favour of kind information.
4. The Deputy Commissioner, Karbi Anglong, Diphu/ West Karbi Anglong, Hamren.
5. The Managing Director, Bijulee Bhawan, Paltan Bazar, Guwahati for favour of kind information.
6. The Chief General Manager, Bijulee Bhawan, Paltan Bazar, Guwahati for favour of kind information.
7. Shri/Smt Richard Rongpi, ACS, Under Secretary, KAAC for information and necessary action.
8. Office order file.

Principal Secretary
Karbi Anglong Autonomous Council
Diphu.

Annexure 2: Office order regarding constitution of the GRC

	<p>ASSAM POWER GENERATION CORPORATION LIMITED Registered Office: Bijulee Bhawan, 3rd floor, Paltan-bazar, Guwahati-781 001, Assam <i>Sri. Utpal Gohain</i> Project Director Lower Kopili Hydro Electric Project (LKHEP) E-mail: pdpmu@apgcl.com</p>																		
No: APGCL/LKHEP/PD/2017-18/21/Part-I/45	Dated: 17.06.2020																		
<u>OFFICE ORDER</u>																			
<p>Sub: Constitution of a three tier Grievance Redressal Committee for Lower Kopili Hydro Electric Project to be implemented under assistance from ADB by APGCL.</p> <p>With the approval of the Competent Authority, the three tier Grievance Redressal Committee for 120 MW Lower Kopili Hydro Electric Project is hereby constituted for Redressal of the grievances related to social and environmental issues of Project Affected Families (PAFs).</p>																			
A) First Tier of GRC																			
Site Engineer of APGCL	Deputy Manager (Civil) Lower Kopili Construction Division, APGCL, Lanka, Hojai District, PIN-782446																		
Site Engineers of Civil & Hydro-mechanical Contractor & Electro-mechanical Contractor	To be Notified in due course																		
Gaon Burahs of Affected Villages	<p><u>Dima Hasao District:</u></p> <table style="width: 100%; border: none;"> <tr> <td>1) Digremdisa</td> <td>2) Borolangklam</td> </tr> <tr> <td>3) Dimalongku</td> <td>4) Sokpuru</td> </tr> <tr> <td>5) Torthelangso</td> <td>6) Borolongku</td> </tr> <tr> <td>7) Krungminglangso</td> <td>8) Rongkhian</td> </tr> <tr> <td>9) Chotolangpher</td> <td>10) Chotolongku</td> </tr> <tr> <td>11) Lorulangso</td> <td>12) Disabra</td> </tr> <tr> <td>13) Mungkele</td> <td>14) Waperdisa</td> </tr> <tr> <td>15) Longku-II</td> <td></td> </tr> </table> <p><u>Karbi Anglong District:</u></p> <table style="width: 100%; border: none;"> <tr> <td>1) Cherimthepl</td> <td>2) Langsomepi</td> </tr> </table>	1) Digremdisa	2) Borolangklam	3) Dimalongku	4) Sokpuru	5) Torthelangso	6) Borolongku	7) Krungminglangso	8) Rongkhian	9) Chotolangpher	10) Chotolongku	11) Lorulangso	12) Disabra	13) Mungkele	14) Waperdisa	15) Longku-II		1) Cherimthepl	2) Langsomepi
1) Digremdisa	2) Borolangklam																		
3) Dimalongku	4) Sokpuru																		
5) Torthelangso	6) Borolongku																		
7) Krungminglangso	8) Rongkhian																		
9) Chotolangpher	10) Chotolongku																		
11) Lorulangso	12) Disabra																		
13) Mungkele	14) Waperdisa																		
15) Longku-II																			
1) Cherimthepl	2) Langsomepi																		
B) Second Tier GRC																			
Deputy General Manager, Civil, (PMU) O/o the Chief General Manager (PP&I), APGCL, Bijulee Bhawan, Paltan Bazar, Guwahati-781001	Chairman																		
Secretary, Revenue North Cachar Hills Autonomous Council, Haflong Dima Hasao District.	Member																		
Secretary, Revenue Karbi Anglong Autonomous Council, Diphu Karbi Anglong District.	Member																		
Assistant General Manager (Civil) Lower Kopili Construction Division, APGCL, Lanka, Hojai District, PIN-782446	Member-Secretary																		

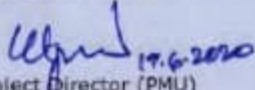
Environment Expert & Social Safeguards Expert Lower Kopili Hydro Electric Project, APGCL Bijulee Bhawan, Paltan Bazar, Guwahati-781001	Members
Contractor's Representative	Member
Project Affected Peoples Association's Representative	Member
Women's Representative	Member

C) Third Tier GRC

Chief General Manager (PP&I) / Project Director, APGCL, Bijulee Bhawan, Paltan Bazar, Guwahati-781001	Chairman
Secretary to the Govt. of Assam, Revenue & Disaster Management Department, Dispur, Guwahati-06 (Representative of the State Revenue Department)	Member
General Manager (Project), O/o the Chief General Manager (PP&I), APGCL Bijulee Bhawan, Paltan Bazar, Guwahati-781001	Member Secretary
Deputy General Manager (PMU), O/o the Chief General Manager (PP&I), APGCL Bijulee Bhawan, Paltan Bazar, Guwahati-781001	Member
Representative of both Dima Hasao and Karbi Anglong District Autonomous Councils	Members
Representatives of Affected persons association	Members

Powers and Functions of Grievance Redressal Committee:-

- A) First Tier of Grievance Redressal Committee will receive grievances and complaints of the aggrieved party and in consultation will try to resolve the same within 15 (fifteen) days. Complaints and grievances will be recorded and the same will be made available during inspection. Contact Details of Gaon Burahs, contractors and project site engineers will be prominently displayed at all construction site offices. The complaints and grievances not resolved at the project level will subsequently be placed in the Second Tier of the GRC.
- B) The second tier of the GRC will have a Member Secretary who will receive complaints and grievances. He may call representatives of project related agencies and Gaon Burahs of the project affected villages to participate in the GRC meetings. Record of each complaint and grievance will be maintained and decision taken will be conveyed in writing to the Affected Persons. Time frame to resolve the issues by the 2nd tier is 45 (forty five) days from the date of receipt of the complaint. In case the grievance cannot be resolved the same needs to be forwarded to the 3rd tier for further action.
- C) The third tier is the APGCL appellate authority located at Guwahati. The Chairman may call representatives of project affected persons, survey department and Gaon Burahs of the project area to participate in GRC meetings. The time frame to resolve the grievance is 90 (ninety) days from registration of the complaint. Any decision taken should be in writing and recorded and the concerned person will be intimated on the decision taken.


Project Director (PMU)
Lower Kopili H. E. Project, APGCL

Copy to:

- 1) The P.S to the Chairman, APGCL/AEGCL/APDCL, Bijulee Bhawan, Paltan Bazar, Guwahati- 01 for kind information of the Hon'ble Chairman.
- 2) The Principal Secretary, Power (Elec.) Department, Govt. Of Assam, Dispur, Guwahati-06, for kind information.
- 3) The Managing Director, APGCL, Bijulee Bhawan, Paltan Bazar, Guwahati-01 for kind information.
- 4) The Secretary to the Govt. of Assam, Revenue & Disaster Management Department, E-Block, Assam Secretariat, Dispur, Guwahati-06 for kind information.
- 5) The Secretary (Revenue), North Cachar Hills Autonomous Council (NCHAC), Dima Hasao District, Haflong- 788819 for kind information.
- 6) The Secretary (Revenue), Karbi Anglong Autonomous Council (KAAC), Karbi Anglong District, Diphu- 782460 for kind information.
- 7) The General Manager (Project), O/o the Chief General Manager (PP&I), APGCL, Bijulee Bhawan, Paltan Bazar, Guwahati- 01, for information.
- 8) The Chief Executive Officer, KANCH Electrical Circle, CAR, APDCL, Diphu-782460 for information.
- 9) The Deputy General Manager (PMU), O/o the Chief General Manager (PP&I), APGCL, Bijulee Bhawan, Paltan Bazar, Guwahati-01, for information.
- 10) The Deputy General Manager, Civil, (PMU), O/o the Chief General Manager (PP&I), APGCL, Bijulee Bhawan, Paltan Bazar, Guwahati- 01, for information.
- ✓ 11) The Assistant General Manager (Civil), APGCL, Lower Kopili Construction Division, Lanka, Hojai District, PIN- 782446 for information.
- 12) The Deputy Manager (Civil), APGCL, Lower Kopili Construction Division, Lanka, Hojai District, PIN- 782446 for information.
- 13) The Environment Expert APGCL Lower Kopili H. E. Project, Bijulee Bhawan, Paltan Bazar, Guwahati-01 for information.
- 14) Social Safe Guard Expert, APGCL Lower Kopili H. E. Project, Bijulee Bhawan, Paltan Bazar, Guwahati-01 for information.
- 15) The Gaon Burahs of Affected Villages, Dima Hasao & Karbi Anglong Districts for information.
- 16) The President, Project Affected Peoples Association, Dima Hasao & Karbi Anglong Districts for information.
- 17) Relevant file.

Ujjwal 17.6.2020

Project Director (PMU)
Lower Kopili H. E. Project, APGCL

Date of Submission	Nature of Grievances

Signature



ASSAM POWER GENERATION CORPORATION LIMITED

Registered Office: Bijulee Bhawan, 3rd floor, Paltanbazar, Guwahati-781 001, Assam.

Tele-Fax: 0361-2739502; E-mail: projectdirector@apgcl.com

No: APGCL/LKHEP/PD/2017-18/21/Part-I/Part file-1/39

Date: 31.08.2021

OFFICE ORDER

In partial modification to the office order no: APGCL/LKHEP/PD/2017-18/21/Part-I/45 dated 17.06.2020 regarding constitution of a three Tier Grievance Redressal Committee (GRC) for Lower Kopili Hydro Electric Project under implementation by APGCL, it is hereby notified that the Chairman for Second Tier (Tier-II) of GRC will be henceforth administered by the General Manager, LKHEP, APGCL, Longku or his representative.

The Deputy General Manager, Civil (PMU) of APGCL Headquarter will act and function as a member Secretary, Deputy General Manager (Civil), LKHEP, APGCL, Longku will act as a member and Assistant General Manager (Civil), LKCD, APGCL, Lanka will remain as member for the Tier-II. The responsibilities and functions of the Tiers will remain unchanged.

The members nominated as representative for Grievance Redressal Committee (GRC) Tier-II and Tier-III by Lower Kopili Hydro Electric Project Affected Peoples' Association (LKHEPAPA) vide letter no: LKHEPAPA/LAU/01/2021-22/2054 dated 23.07.2021 is hereby approved.

Second Tier (Tier-II) GRC

General Manager, Lower Kopili Hydro Electric Project, Longku, APGCL	Chairman
Deputy General Manager, Civil (PMU), O/o the Chief General Manager (PP&I), APGCL	Member Secretary
Secretary, Revenue, North Cachar Hills Autonomous Council, Haflong, Dima Hasao District	Member
Secretary, Revenue, Karbi Anglong Autonomous Council, Diphu, Karbi Anglong District	Member
Deputy General Manager, (Civil), O/o the General Manager, LKHEP, APGCL, Longku	Member
Assistant General Manager (Civil), Lower Kopili Construction Division, APGCL, Lanka	Member
Environment Expert & Social Safeguard Expert, Lower Kopili Hydro Electric Project, APGCL	Members
Contractor's Representative	Member
Project Affected Peoples Association's Representative	Member
Women's Representative	Member

The order is modified up to this extent only. All other conditions will remain unchanged.

Project Director (PMU)
APGCL, Bijulee Bhawan, Guwahati-1

Copy to:

1. The P.S. to the Chairman, APGCL/AEGCL/APDCL, Bijulee Bhawan, Paltan Bazar, Guwahati-01 for kind information of the Hon'ble Chairman
2. The Principal Secretary, Power (Elec.) Department, Govt. of Assam, Dispur, Guwahati-06 for kind information
3. The Managing Director, APGCL, Bijulee Bhawan, Paltan Bazar, Guwahati-01 for kind information
4. The Secretary to the Govt. of Assam, Revenue and Disaster Management Department, E-Block, Assam Secretariat, Dispur, Guwahati-06 for kind information
5. The Secretary (Revenue), North Cachar Hills Autonomous Council (NCHAC), Dima Hasao District, Haflong-788819 for kind information
6. The Secretary (Revenue), Karbi Anglong Autonomous Council (KAAC), Karbi Anglong District, Diphu-782460 for kind information
7. The General Manager (Project), O/o the Chief General Manager (PP&I), APGCL, Bijulee Bhawan, Paltan Bazar, Guwahati-01 for information
8. The General Manager, LKHEP, Longku for information
9. The Chief Executive Officer, KANCH Electrical Circle, CAR, APDCL, Diphu-782460 for information
10. The Deputy General Manager (PMU), O/o the Chief General Manager (PP&I), APGCL, Bijulee Bhawan, Paltan Bazar, Guwahati-01 for information
11. The Deputy General Manager, Civil (PMU), O/o the Chief General Manager (PP&I), APGCL, Bijulee Bhawan, Paltan Bazar, Guwahati-01 for information
12. The Assistant General Manager (Civil), APGCL, Lower Kopili Construction Division, Lanka, Hojai District Pin-782446 for information
13. The Deputy Manager (Civil), APGCL, Lower Kopili Construction Division, Lanka, Hojai District Pin-782446 for information
14. The Environmental Expert, APGCL, Lower Kopili H.E. Project, Bijulee Bhawan, Paltan Bazar, Guwahati-01 for information
15. The Social Safeguard Expert, APGCL, Lower Kopili H.E. Project, Bijulee Bhawan, Paltan Bazar, Guwahati-01 for information
16. The Gaon Burhas of Affected Villages, Dima Hasao & Karbi Anglong Districts for information
17. The President, Project Affected Peoples Association, Dima Hasao & Karbi Anglong Districts for information
18. Relevant file


Project Director (PMU)
APGCL, Bijulee Bhawan, Guwahati-1

Table 5: Entitlement Matrix

Category	Type of Impact	Entitlements	Institution (s) Responsible to Deliver	Remarks
Part 1. Compensation for land losses including crops and trees – For all Affected Households				
Patta Land (Registered, long-term leased land)	<ul style="list-style-type: none"> - Loss of paddy land - Loss of land with valuable spice plants 	<ol style="list-style-type: none"> 1. Compensation rates proposed by ADC and agreed with GoA and the leaseholders (APs). 2. <i>Jirat</i> values⁴⁵ assigned by ADC to land and agreed by GoA, APGCL, and leaseholders (APs) 3. Fresh land leaseholds in nearby areas on priority basis as per ADC's regulations. 	<p>APGCL and ADC</p> <p>Revenue Officer of ADC</p>	<ol style="list-style-type: none"> 1. Compensation payment by the two ADCs, supervised by a committed comprising representatives of PAPA, APGCL and ADC 2. Payment by online transfer or check written in head of family or leaseholder's name. ⁴⁶ 3. <i>Gaon bura</i> in each affected community will in consultation with ADC will allocate fresh land on leasehold to those who are fully or partially displaced.
Non-patta land (Non-registered short-term leased land)	<ul style="list-style-type: none"> - Loss of dry land (highland) 	<ol style="list-style-type: none"> 1. Compensation rates proposed by ADC and agreed among ADCs, GoA, and the APs. 2. <i>Jirat</i> value assigned by ADC and agreed by APGCL and leaseholders (APs); 	<p>APGCL, and ADC</p> <p>Revenue Officer, ADC</p>	<ol style="list-style-type: none"> 1. Compensation payment by the two ADCs, supervised by a committed comprising representatives of PAPA, APGCL and ADC 2. Payment by online transfer or check written in head of family or leaseholder's name. ⁴⁷

⁴⁵ Value of the assets attached to land and the cost of land development. The *jirat* was decided by the ADC in consultation with the APs, Revenue Department of GoA and ADCs.

⁴⁶ Joint account of husband and wife or check issued in both husband's and wife's names will be encouraged subject to APs willingness and regulatory compliance.

⁴⁷ Joint account of husband and wife or check issued in both husband's and wife's names will be encouraged subject to APs willingness and regulatory compliance.

Category	Type of Impact	Entitlements	Institution (s) Responsible to Deliver	Remarks
		3. Fresh land leaseholds in nearby areas on priority basis as per ADC's regulations.		3. <i>Gaon bura</i> in each affected community in consultation with ADC will allocate fresh land on leasehold to those who are fully or partially displaced.
Trees and cultivated crops	<ul style="list-style-type: none"> - Loss of Trees, and plants - Loss of Paddy cultivation 	Annual average income x the remaining productive years ⁴⁸	APGCL, ADC, Department of Agriculture, GOA	Official compensation rates will be established by the Agricultural Department before land acquisition
Part 2. Relocation of Physically Displaced Households and Structures Affected				
Homestead and house	- Loss of residential homestead and dwelling	<p>1. A land parcel of 150sqm per household at the resettlement site will be given free, and it shall be free from all encumbrances. Land tenure security at the site is guaranteed. The resettlement site will have basic amenities and road connectivity with outside.</p> <p>2. A new house as per <i>Indira Awas Yojana</i> specifications will be provided and each physically displaced household will get tenure security.</p> <p>Or</p> <p>3. If the physically displaced household preferred, it could obtain the equivalent replacement cost of the house in lieu of the house. A fully affected house will receive at least Rs150,000 and a partially affected</p>	APGCL, ADC, GOA	<p>1. Agencies work closely with affected households and their PAPA in developing the relocation site.</p> <p>2. House plans and budget are to be agreed to by APGCL, ADC and affected households.</p> <p>3. APGCL and ADCs will coordinate with the <i>Pradhan Mantri Awaas Yojana – Gauri</i> Program in Assam in choosing the design and construction of houses.</p> <p>4. APGCL will develop the resettlement site with basic amenities such as water, drainage, roads, school, play ground and community hall.</p>

⁴⁸ The remaining productive years are determined considering total lease period and continuation of the lease contract. After the leasehold is over, the leaseholder does not have any claim over the land or its products.

Category	Type of Impact	Entitlements	Institution (s) Responsible to Deliver	Remarks
		household will receive at least Rs100,000.		5. APGCL will provide funds to build houses or compensation packages in lieu of houses.
Household Structures	- Loss of livestock sheds/pens and petty shops	Rs25,000 as one-time financial assistance per affected household	APGCL, ADC, GOA	Identification, recording current status, and the value of livestock sheds/pens and petty shops for artisan, and small trading will be ascertained by APGCL prior to land acquisition and compensation payment
Other Household Assets	- Affected private assets such as water pumps	Replacement cost	APGCL, ADC	Identification, recording current status and the value of the items will be estimated prior to land acquisition and compensation payment.
Transportation Assistance	- Shifting of household belongings, salvaged building materials, and animals	Rs 50,000 per physically displaced household	APGCL, ADC, PAPA	No deduction will be made for the salvaged timber and construction material. Sufficient notice regarding free transportation of household goods will be given to each displaced household. Cost will be borne by APGCL. Salvaged items such as timber will also be transported free of charge.
Subsistence Allowance	- Physically displaced households	Monthly subsistence allowance of Rs 3,000 for 12 months	APGCL, ADC	Pay the household chief by a check direct by APGCL
Public Facilities	- Loss of public infrastructure facilities	1. Piped water supply 2. Sanitation and drainage 3. Health care centre 4. Higher secondary school 5. Playground	APGCL, relevant ADC departments	Consult the community on location, type and cost of facility reconstruction APGCL will pay for the construction of the facilities.
Common property	- Loss of common land	1. Community land for public purposes at the relocation site	APGCL, ADC	Consult the affected households and PAPA on the location, type, cost estimates of facilities.

Category	Type of Impact	Entitlements	Institution (s) Responsible to Deliver	Remarks
		2. Grazing rights on nearby land or an allowance to buy fodder in lieu of the lost grazing land. If not provided, 100 days of Minimum Assured Wages (MAW) per year for 05 years as a grant towards the loss of fuel and fodder		
Stamp Duty and Registration		The stamp duty and the other fees payable for land registration for permanent land lots at the resettlement sites and for new leaseholds. The land for houses allotted to physically displaced households will be registered in head of the family's name ⁴⁹ property.	APGCL, ADCs	APGCL will bear the costs of stamp duty and land registration.
Part 3. Income Restoration and Improvement of Affected Households				
Resettlement Allowance⁵⁰	- All affected households	One-time resettlement allowance of Rs 50,000 per physically displaced household	APGCL, ADC, PAPA	Pay the household chief by a check direct
Special subsistence allowance for each affected scheduled tribal household⁵¹	- Additional assistance for scheduled tribal households	Rs50,000 per scheduled tribe household	APGCL, ADC	Pay the household chief by a check direct by APGCL

⁴⁹ Registration in both husband's and wife's names will be encouraged subject to APs' willingness and regulatory compliance.

⁵⁰ As per the Right to Fair Compensation and Transparency in Land Acquisition, Rehabilitation and Resettlement Act, 2013 (The Act 2013)

⁵¹ As per the Act 2013.

Category	Type of Impact	Entitlements	Institution (s) Responsible to Deliver	Remarks
Income Restoration and Improvement	- Recovery and improvement of household income	<p>Where jobs are created through the project, after providing suitable training and skill development in the required field, make provisions for employment at a rate not lower than the minimum wages provided for in any other law for the time being in force, to at least one member per affected family in the project or arrange for a job in such other project as may be required,</p> <p><u>Or</u></p> <p>One-time payment of Rs500,000 per affected household</p> <p><u>Or</u></p> <p>Annuity of Rs2,000 per month for 20 years with appropriate indexation to the Consumer Price Index for agricultural labourers.</p> <p>Unskilled employment at project sites will be given to the local people including the APs on priority basis.</p>	APGCL, ADC	<p>1. Income generating program will be launched by APGCL well in advance of land acquisition</p> <p>2. APGCL will explain and discuss with APs, PAPA, and ADC the program.</p> <p>3. In case of one-time payment of lump-sum, households will receive money from their ADC before economic or physical displacement.</p> <p>4. Payment by check to each affected household.</p>
Skill Training	- Developing income generation opportunities	<p>Affected persons will be offered necessary skill training for the development of entrepreneurship, technical and professional skills for self-employment; e.g.,</p> <ol style="list-style-type: none"> 1. Agricultural equipment operation 2. Motor mechanics 3. Electric equipment repair 	APGCL, ADC, national and state level vocational training institutions	<p>APGCL and ADC will coordinate with national level and state level agencies to enlist the APs in their programs, where possible.</p> <p>APGCL and ADCs will focus on the revival and protection of tribal crafts, weaving of tribal clothes, and tribal</p>

Category	Type of Impact	Entitlements	Institution (s) Responsible to Deliver	Remarks
		4. Driving 5. Sawing 6. Tribal crafts, clothes, and artifacts 7. Cottage industries		artifacts. Suitable marketing facilities will be provide as part of skill training program.
Fishing Rights	-	Each affected household has fishing rights in the reservoir, as determined by the GOA and ADC	APGCL, ADC, GA???	APGCL will develop a plan for the allocation of fishing rights in the reservoir among affected households before project construction activities start. Affected households will have priority in receiving fishing permits in the reservoir.
Part 4. Local Area Development				
Educational facilities		1. Five schools with the following facilities at each: building (classrooms 4+office room+1 hall+ white washing and painting; 2. Furniture and fixtures; Equipment for laboratories; 3. Upgrade of school library; 4. Improvement of drinking water facility; 5. Improvement of toilet facilities	APGCL, ADC, GOA	APGCL, ADC and GOA will consult PAPA and affected households in selecting the locations, planning, construction of facilities with PAPA and affected households.

Public Consultation Meeting – 09.04.2022

The second Public Consultation Meeting was held on the 9th of April 2022 at Rongtarme village under Langsomepi revenue village, West Karbi Anglong, Assam under Karbi Anglong Autonomous Council (KAAC) Diphu. The day's meeting was held under the Chairmanship of Mr. Kennedy Enghi Secretary PAPA and other officials presents are Mr. Sangram Singh Social Development Consultant from PMC, Mr. Lumjong Kro Mondol from Revenue Department Dongkamokam and officials from CRADLE NGO are Mr. L.P Singh Social Development Expert, Mrs. Sumana Das Communication Specialist, Mr. Abraham Teron Assistant Communication Specialist, Mr. Karuna Bora field staff, Mr. Narayan Kalita field staff, Mrs. Glorious Engtipi Field staff. The Gaon Buras, Sarkari Gaon Buras (SGB), PAPA members and PAPs participated in the meeting. The Chairman of the day's meeting Mr. Kennedy Enghi Secretary PAPA gave the Welcome address and introduction of the officials visiting the village and Mrs. Sumana Das Communication Specialist, CRADLE NGO gave the purposed of the meeting and briefed about the importance of the Census and Socio Economic survey and the expected outcome of the survey for the PAPs for Micro Plan preparation and Mr. Sangram Sigh explained the flow of information, required documents to be produced during survey and providing of correct data and information. Mr. Lumjong Kro Mondol, Dongkamokam Revenue Circle asked the PAPs to cooperate and participate during the survey and highlighted some of the important facts for consideration on PAPs Name appearing differently, but court affidavit has been done for some of the PAPs and on some of the PAPs not having the bank accounts. Some notable PAPs presented the requirement of the village for their development such as drinking water, road connectivity, community hall, School building and livelihood development activities which was presented before the APGCL earlier. The meeting ended with the Chairman speech and with a vote of thanks.

Photographs of the Meeting



		
<p>Mr. Lumjong Kro, Modol addressing the meeting</p>	<p>Mr. Olius Teron, Rongtarme (SGB) addressing the Meeting</p>	<p>PAPs during meeting</p>
		
<p>PAPs women Participants along with NGO & PAPA</p>	<p>PAPs with NGO, PMC & PAPA</p>	<p>PAPs Male participants</p>

Meeting Attendance Sheet



ASSAM POWER GENERATION CORPORATION LIMITED
120 MW LOWER KOPIJI HYDRO ELECTRIC POWER PROJECT,
PKG-2



PUBLIC CONSULTATION MEETING
IMPLEMENTATION OF CRTDP (ATTENDANCE SHEET)

Venue/Location: Rantarme Date & Time: 9.4.22

Purpose of Meeting: General Awareness in Karbi Affected village.

Sl. No.	Name	Age	Sex	Occupation	Contact no.	Signature
1	Longli Lyli	35	M	Housewife	600193 4453	
2	Sarning Sonung	40	M	Farmer	9531115688	
3	Solterron		M			S. Teron
4	Roston Teron	37	M		9435367286	
5	Francis Millick	34	M		9613146559	
6	Suetin Millick	42	M		9401674477	
7	Joseph Millick	58	M		602632744	
8	Wilson Serang	36	M		93659191 80	
9	Joy Sing Phangcho	54	M		882277 1232	
10	Robin Rongshi	38	M	Farmer		R. Rongshi
11	Joy Sing Phangcho	36	M		8099150 810	
12	Markus Teng	47	M		8912244 160	
13	Benjamin Lyli	60	M	Cultivator		B. Lyli
14	Refulgen Lyli	36	M	11	845329 4984	



ASSAM POWER GENERATION CORPORATION LIMITED
120 MW LOWER KOPILI HYDRO ELECTRIC POWER PROJECT,
PKG-2



PUBLIC CONSULTATION MEETING
IMPLEMENTATION OF CRTDP (ATTENDANCE SHEET)

Venue/Location:

Date & Time:

Purpose of Meeting:

Sl. No.	Name	Age	Sex	Occupation	Contact no.	Signature
15	Khorbing Terang	26	M	Farmat	8133945 289	K. Terang
16	Welbe Durong	42	M	Farmer	8099152809	W. Durong
17	Elisa Englang	53	M	Farmer		E. Englang
18	Saul Englang	39	M	Farmer	9374665229	S. Englang
19	Kas Hase	35	M	"	9401279773	K. Hase
20	Anondengti	36	M			A. Anondengti
21	Thezong	37	M			T. Thezong
22	Alexander Terang	38	M			A. Terang
23	KILSON MILICK	41	M		96786 83859	K. Milick
24	Loren Milick	40	M			L. Milick
25	Sarmen Englang	45	M			S. Englang
26	Kangbura Bey	45	M			K. Bey
27	Santhe Milick	43	M		939421 5457	S. Milick
28	Sing Rongpian	55	M			S. Rongpian



ASSAM POWER GENERATION CORPORATION LIMITED
120 MW LOWER KOPILI HYDRO ELECTRIC POWER PROJECT,
PKG-2



PUBLIC CONSULTATION MEETING
IMPLEMENTATION OF CRTDP (ATTENDANCE SHEET)

Venue/Location:

Date & Time:

Purpose of Meeting:

Sl. No.	Name	Age	Sex	Occupation	Contact no.	Signature
29	Bhobson Terang	36	M		809948 4242	Bhobson
30	Hepking Terang	30	M			H. Terang
31	Aldrick Durong	40	M			A. Durong
32	Dorinson Millik	47	M			D. Millik
33	Samuel Millik	32	M			S. Millik
34	Chandro Millik	60	M		8136083163	Chandro
35	Mathias Teron	75	M			Mathias
36	Sarthe Millik	50	M		8099082277	Sarthe
37	Dewan Enghe	50	M		9365319077	Dewan
38	Samme Millik	50	M		600387 4462	Samme
39	Rajen Englag	56	M	Cultivator	9435324577	Rajen
40	Rongkhang Liso	60	M			R.K. Liso
41	Bipul Rongphan	30	M	Self employee	6001316200	Bipul
42	Philip Siny Terang	33	M	Self employee	08640 32717	Philip



ASSAM POWER GENERATION CORPORATION LIMITED
120 MW LOWER KOPILI HYDRO ELECTRIC POWER PROJECT,
PKG-2



PUBLIC CONSULTATION MEETING
IMPLEMENTATION OF CRTDP (ATTENDANCE SHEET)

Venue/Location: **RONGTARME**

Date & Time:

Purpose of Meeting:

Sl. No.	Name	Age	Sex	Occupation	Contact no.	Signature
43	Mokansing Teron	32	M	Cultivator	7399105957	[Signature]
44	Shree Hemant	48	M	Cultivation etc	93940 76978	[Signature]
45	Harsing Zgi	49	M	Cultivation	99511 245415	[Signature]
46	Joseph Rongphar	50	M	Rongphar	600302216	[Signature]
47	Kasang Hasepi	38	F	Cultivator	8133041716	[Signature]
48	Mexiana Engipi	48	F	Cultivator	600178 1373	[Signature]
49	Kabon Milkipi	55	F	Cultivator	863847 2297	[Signature]
50	Ruey Milkipi	52	F	Cultivator		[Signature]
51	Mixina Engipi	30	F	Cultivator	943545 0065	[Signature]
52	Joybing Milkik	60	M	Cultivator		[Signature]
53	Katir Rongphar	31	F	Rongphar	943446 8297	[Signature]
54	Maina Engipi	43	F	Cultivation	8822771232	[Signature]
55	Elisha Chinthry	72	M	social worker	8011526 402	[Signature]
56	Dennis Teron	62	M	social worker	8812301 405	[Signature]



ASSAM POWER GENERATION CORPORATION LIMITED
120 MW LOWER KOPILI HYDRO ELECTRIC POWER PROJECT,
PKG-2



PUBLIC CONSULTATION MEETING
IMPLEMENTATION OF CRTDP (ATTENDANCE SHEET)

Venue/Location: RONGTARME

Date & Time:

Purpose of Meeting:

Sl. No.	Name	Age	Sex	Occupation	Contact no.	Signature
57	Harging Lisso	38	M	culture Lisso	9434615 5826	Lisso
58	Babu Tera	32	M	R.R.L.C Councila		BT
59	Senion Jera	25	M	Student	9618213026	Senion
60	Sondar Huse	23	M	Farmer	69011468 40	Sondar
61	Khon Sing Dera	35	M)	6901818 724	Khon
62	Rajen Teron	55	M)	813334 6549	
63	Mauling Son Dewey	49	M)	709944 623	
64	Calvin Huse	23	M)	9365323 202	Calvin
65	Risard Dewey	40	M			Risard
70	Honati Tera	43	M	.	8089120 622	Honati
71	Chondri Tera	25	M	=	8133946 929	
72	Babusy Rang Rhar	26	M	=	967890 2199	Babusy
73	Martin Dewey	60	M	=	943516 3173	Martin
74	Petar Huse	35	M	=	97073 48610	Petar



ASSAM POWER GENERATION CORPORATION LIMITED
 120 MW LOWER KOPILI HYDRO ELECTRIC POWER PROJECT,
 PKG-2



PUBLIC CONSULTATION MEETING
 IMPLEMENTATION OF CRTDP (ATTENDANCE SHEET)

Venue/Location: RONGTARME

Date & Time:

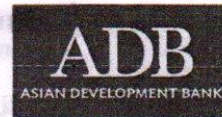
Purpose of Meeting:

Sl. No.	Name	Age	Sex	Occupation	Contact no.	Signature
75	JEMSON BRY	27	M	CULTURIST	-	Jemson
76	DAVID CHINTEBOY	45	M			David

75
 76
 76



ASSAM POWER GENERATION CORPORATION LIMITED
120 MW LOWER KOPILI HYDRO ELECTRIC POWER PROJECT,
PKG-2



PUBLIC CONSULTATION MEETING
IMPLEMENTATION OF CRTDP (ATTENDANCE SHEET)

Venue/Location: **RONGTARME**

Date & Time:

Purpose of Meeting:

Sl. No.	Name	Age	Sex	Occupation	Contact no.	Signature
77	KABLOOM TISSOPI	52	F	Cultivator		-
78	LUTA HANSEPI	45	F	"		-
79	BASAPI TISSOPI	55	F	"		-
80	KARLONG RONGTAPI	45	M	"		-
81	BASAPI TERKAPI	"	M	"		
82	ZEILED INKLEMPI	42	M			
83	অসীম সিকতা		M			অসীম সিকতা
84	Ran Hansepi	35	M		80999060 19	Katanspi
85	Phulish chinkangpi	45	F		940116907	E
86	KAZELISIT RONGHAPI	47	M		-	
87	KASER HONGREPI	42	M		-	
88	KARE RONGHAPI	50	M			
89	KACHEE MILLICKPI	60	M			
90	PRECITA RONGHAPI	62	M			



ASSAM POWER GENERATION CORPORATION LIMITED
120 MW LOWER KOPILI HYDRO ELECTRIC POWER PROJECT,
PKG-2



PUBLIC CONSULTATION MEETING
IMPLEMENTATION OF CRTDP (ATTENDANCE SHEET)

Venue/Location: **PONATARME**

Date & Time:

Purpose of Meeting:

Sl. No.	Name	Age	Sex	Occupation	Contact no.	Signature
91	DENORIS ENGLENGDI	55	F	CULTIVATOR	-	
92	LUCIA TERONPI	32	"	"	-	
93	Pratima	31	"	"		P. Teronpi
94	WESNES	69	"	"	690055 2940	W. Millickpi
95	Faridaltanse	31	"	"	807302 1998	F. Hansepi
96	Nima Englingpi	29	"	"	940149 41974	N. Englingpi
97	Kadom Engtipi	32	"	"		K. Engtipi
98	Besti Teronpi	48	"	"		B. Teronpi
99	Rosetina Hansepi	32	"	"	600030737	R. Hansepi
100	Kherisa Durongpi		"	"		K. Durongpi
101	Shrid Millicksi	40	"	"	9401446804	S. Shrid
102	Socila Ronp Phaci	25	"	"	84539311932 SP	
103	Nimolota Bepi	18	"	"	2026399 178	Nimol
104	Mercy Hansepi	65	"	"		M. Hansepi

M - 70
F - 34
Total - 104

Singh, Sangram

From: Project_new Director <projectdirector@apgcl.com>
Sent: 24 June 2022 13:54
To: GM LKHEP
Cc: Bali, Jatinder; Reddy, Vuyyuru; Dash, Ashutosh; Das, Jayanta; Singh, Sangram
Subject: Fwd: LKHEP_Annual training of PMU and other staff on ADB's SPS 2009, gender mainstreaming, POSH at workplace, etc.

Dear Sir,

Please find the mail received from Team Leader, PMC regarding **conduct of training on ADB's SPS 2009, gender mainstreaming, POSH at workplace on 28th June, 2022 at LKHEP site**. Therefore, request you to kindly depute officers and staffs from LKHEP site to attend the scheduled meeting.

This is for your kind information.

With regards,

----- Forwarded message -----

From: Bali, Jatinder <jatinder.bali@afry.com>

Date: Thu, 23 Jun 2022 at 14:44

Subject: LKHEP_Annual training of PMU and other staff on ADB's SPS 2009, gender mainstreaming, POSH at workplace, etc.

To: Project_new Director <projectdirector@apgcl.com>

Cc: Singh, Sangram <sangram.singh@afry.com>, Reddy, Vuyyuru <Vuyyuru.Reddy@afry.com>, Kumar, Shashi <Shashi.Kumar@afry.com>, Dash, Ashutosh <ashutosh.dash@afry.com>, Das, Jayanta <jayanta.das@afry.com>, bibhu.bhuyan@apgcl.org <bibhu.bhuyan@apgcl.org>

Dear Sir,

Gender Action Plan (GAP) is an approved document from ADB/APGCL, and its implementation is the part of project progress. In output 2.2 and 2.3 of GAP activities, under "Institutional Capacity strengthening of APGCL staff" has been agreed among other necessary activities. Among the APGCL staff, 6 women staff need to be trained to comply with gender equality. (see the below table, copied from the main GAP report). The progress towards the training etc will be the part of Semi-annual Safeguard Monitoring Report (SMR).

Activity	Indicators/Target	Target
OUTPUT 2: INSTITUTIONAL CAPACITY OF APGCL STRENGTHENED		
2.2 Organize annual training of PMU and other staff on gender mainstreaming, prevention of sexual harassment at workplace, GAP monitoring requirements	2.2.1 training conducted every year (30 staff including 6 women staff trained)	Every year training on Gender, POSH etc.
	2.2.2 A pre- and post-assessment questionnaire designed and administered in each training to evaluate the effectiveness of the training, and assessment of findings documented and shared	
	2.3.1 100% compliance by all contractors	

Activity	Indicators/Target	Target
2.3 Ensure compliance of applicable labor standards including no wage differentiation between men and women, ensuring occupational health and safety, segregated sanitation facilities for workers	2.3.2 Contractors encouraged to employ female workforce in skilled, semi-skilled and unskilled categories and maintain data on the same	Orientation to the contractor
	2.3.3 Orientation to all contractors, including laborers on applicable labor standards with special focus on gender equality in wages, health, safety, and hygiene issues on work site, and maintaining sex-disaggregated record of workforce	

Activity number 2.3 is to comply with the applicable labour standards with the help of contractors, Environmental Engineer and Safety Officer. Few months back our social and Env. Expert along with the Environmental and Safety Experts of L&T visited to assess the compliance of agreed activities. In LKHEP we are observing in our day-to-day work several safety lapses, poor-housekeeping, and construction site management. Training on labour standards and OHS will also be covered.

To achieve the above targets, we are planning to conduct ½ day workshop at PMC office Longku with the following plan on the 28th June 2022:

Sl. No.	Time	Topic	Trainer	Venue:
1	10:00-10:10	Opening Remarks	TL/RE/DTL, PMC	Kolong Block, PMC office
2	10:15-11:00	PPT on OHS Training	Sangram Singh	
3	11:00-11:30	Involuntary Resettlement Requirement	Dr Jayanta Das	
4	11:30-12:00	(IR) Management & Safeguards Implementation		
5	12:15-12:30	Monitoring		
6	12:30-01:30	Gender Mainstreaming/Action Plan (GAP)		

To attend the above meeting remotely a virtual link will also be generated and shared after confirmation from APGCL, HQ. Feedback form is attached here with for review and finalisation based on the training/workshop.

It is therefore requested to kindly intimate all the Engineers and other staff associated with 120 MW LKHEP for the training APGCL concerned staff (Er Mitul Das, Shri Pankaj Hazarika, Dr Deepak Baruah) and L&T (All the EHS team including Sr. EHS Engineer, Sr. Environment Engineer, EHS officer, EHS Stewards (3nos), First Aiders and Site Supervisors also need to attend the same.

Thanks & Regards,

 Jatinder Bali
 Team Leader, Lower Kopili HEP

AF Consult Switzerland Ltd.

M: +91 9833059550| T: +91 120 4185542
jatinder.bali@afry.com

afry.com| [Linked In](#)



AF and Pöyry have come together as AFRY.

We don't care much about making history. We care about making future

"This e-mail may contain confidential and corporate proprietary information. If received in error, kindly notify us immediately and delete the communication from your system. Our contacts with you may further involve processing of personal data. Please read more about how and why AFRY processes personal data on our website www.afry.com."

!

--

Project Director (PMU),
APGCL

Brief report on annual training of PMU and other staff on gender mainstreaming, prevention of sexual harassment at workplace, GAP monitoring requirements conducted on 28th June 2022

In compliance of the approved gender action plan Output 2: Institutional Capacity of APGCL Strengthened Activity 2.2 Organize annual training of PMU and other staff on gender mainstreaming, prevention of sexual harassment at workplace, GAP monitoring requirements, sub-activity 2.2.1 training conducted every year (30 staff including 6 women staff trained), a pre informed annual training has been conducted by Social & Resettlement and Environmental Expert of PMC. In this regard, an invitation email with virtual link was communicated from Team Leader PMC to Project Director, General Manager APGCL and other participants.

The venue of training was project location at Longku, however, a virtual link of the same was generated and circulated among the participants located at APGCL HQ at Guwahati.

A power point presentation presented among the participants covering (i) Involuntary Resettlement-Safeguards Requirement, (ii) Involuntary Resettlement- Management & Implementation, (iii) Involuntary Resettlement- Safeguards Monitoring and (iv) Gender Action Plan (GAP) implementation covering gender mainstreaming, prevention of sexual harassment at workplace, GAP monitoring requirements.

Apart from above, Occupational Health and Safety- Environmentally Sound Construction Site Management power point presentation was also shared among the participants. Best practices in construction in funding projects were shown. Compliance monitoring as per Environment Management Plan were also presented and discussed.

A feedback form was circulated among the participants and summary captured. In overall as this is the first training to the present engineers and staff of APGCL, junior officers were eager to know more about the procedures and guidelines so that 100% compliance would be ensured.



A group photo captured after training, From Left: (1) Er. (2) Er. Parag Jyoti Ligira, (3) Er. Jonardan Rongpi (Gender Focal Point), (4) Er. Dilip Kumar Das, GM Lanka, (5) Er. Sujit Chanda, DGM Civil, (6) Er. Abinanadan Bora, (7) Er. Diganta, (8) Er. Animesh, (9) Dr Jayanta Das, Environmental Expert, PMC, (10) Er Vicky Sharma, Material & Quality Control Engineer and (11) Sangram Singh, Social and Resettlement Expert.

Virtual participants: Mrs Rita Boro, AM O/o the CGM (PP&I) Gender Focal Point, Pankaj Hazarika, Social Expert, APGCL, Dr Deepak Kr Baruah, Environmental Expert, APGCL (more details are in attendance sheet attached below)

Attendance Sheet: Physically Presented Participants at Longku



ASSAM POWER GENERATION CORPORATION LIMITED
LOWER KOPILI HYDRO ELECTRIC POWER PROJECT
ATTENDANCE SHEET

Venue/Location: **PMC Conference Hall at Kolong Block, Longku**

Date: **28 June 2022**

Purpose of Meeting: **Annual training of PMU and other staff on gender mainstreaming, prevention of sexual harassment at workplace, GAP monitoring requirements, OHS etc**

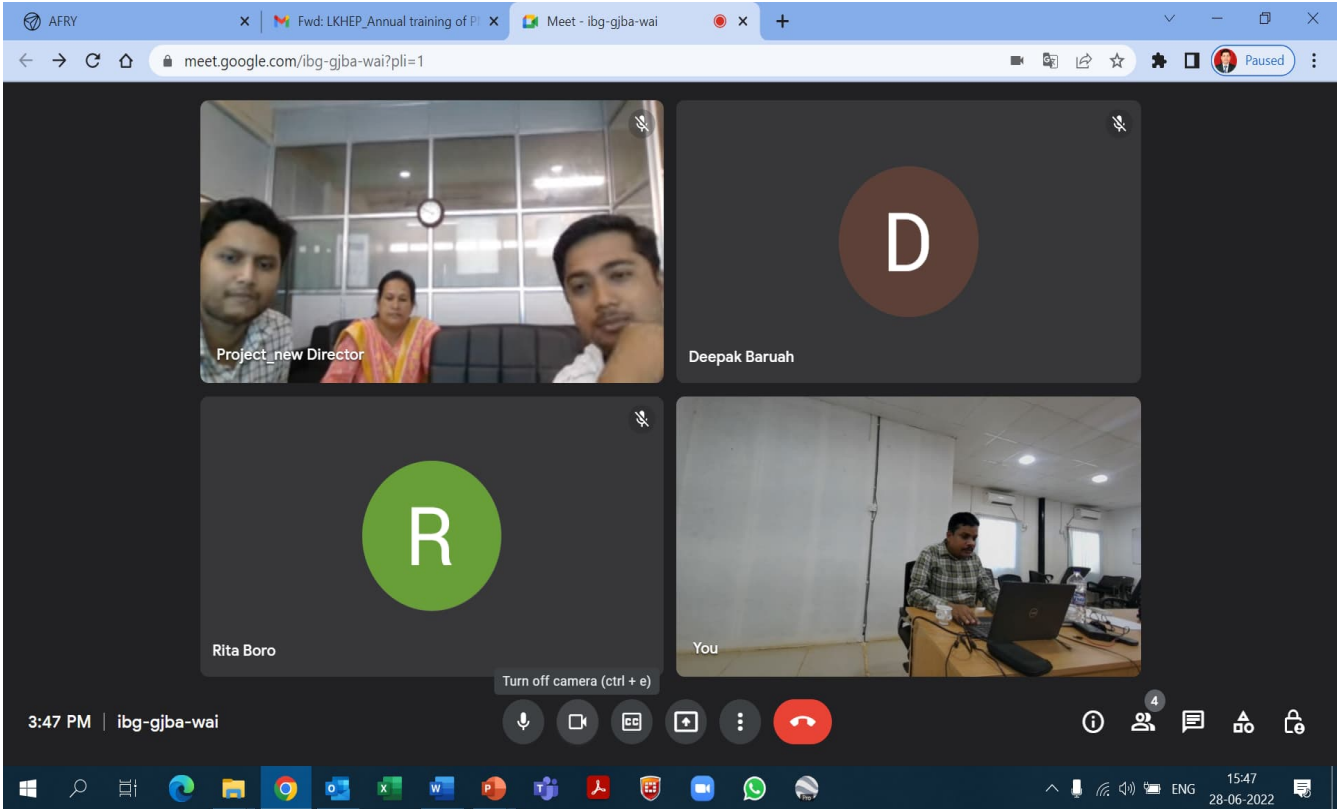
Sl. No.	Name	Sex Age	Designation / Dept.	Contact no./Email	Signature
1.	Dilip Das	M 57	GM, Lanka, APGCL	gmkhep@apgcl.com	
2.	Jonar Rongpi	M	DGM, Civil, APGCL		
3	Sujit Chanda	M 34	AGM, APGCL	agmkcd@gmail.com	
4	Animesh Saikia	M 32	AGM (I/C), APGCL	animeshmail22@gmail.com	
5	Apurbajyoti Biswas	M 28	AGM (I/C), APGCL	apurbajyoti.tsk@gmail.com	virtually
6	Sarbajit Bhattacharyya	M 28	DM, APGCL	sarbajit1993@gmail.com	
7	Biju Difofsa	M 46	AM, APGCL	difoesabiju@gmail.com	
8	Dhiraj Borthakur	M 42	AM, APGCL	dhirajborthakur@gmail.com	
9	Diganta Dutta	M 38	JM, APGCL	digantadutta001.dd@gmail.com	
10	Animesh Barman	M 28	JM, APGCL	animeshbarman60@gmail.com	
11	Arunabh Borah	M 29	JM, APGCL	arunabhbrah@gmail.com	
12	Krishna Singh	M 46	JM, APGCL	singhkrishna451@gmail.com	
13	Ravi Poddar	M 27	JM, APGCL	Ravipoddar1994@gmail.com	virtually
14	Bitu Hazarika Moni	M 29	JM, APGCL	Bituhazarika9706@gmail.com	virtually

Sl. No.	Name	Sex Age	Designation / Dept.	Contact no./Email	Signature
15	Dibakar Das	M 46	JM, APGCL	apgclidibakar@gmail.com	virtually
16	Parag Jyoti Ligra	M	JM, APGCL	Paragjoyti.ligra@apgcl.com	
17	Rita Boro	F	AM, APGCL	rita.boro@apgcl.com	virtually
18	Sri Manish Mahanta	M	DM, APGCL		virtually
19	Mitul Das	M 27	JM, APGCL	mitul.das@apgcl.org	virtually
20	Dr Deepak K Baruah	M 61	Environment Expert, SESC, APGCL	deepakbaruah007@gmail.com	virtually
21	Pankaj Hazarika	M 51	Social Expert, SESC, APGCL	hazarika072@gmail.com	virtually
22	Koti Reddy Vøyyuru	M 54	Resident Engineer, PMC	vuyyuru.Reddy@afry.com	
23	Shashi Sharma	M 43	Deputy Project Manager, PMC	shashi.Kumar@afry.com	
24	Jayanta Das	M 49	Environment Specialist, PMC	jayanta.das@afry.com	
25	Sangram Singh	M 42	Social and Resettlement Expert, PMC	sangram.singh@afry.com	

26. Soutrabh Datta M27 JM, APGCL Soutrabh.jit23@gmail.com



Attendance Sheet: Virtually Presented Participants at APGCL HQ Guwahati



Feedback Forms

**Training Programme of
Implementation of Social, Environment Safeguards and Gender Action Plan (GAP)
120 MW LKHEP, In Asian Development Bank (ADB) operations
Assam Power Sector Investment Program - Tranche 3**

FEEDBACK FORM

Q. 1: how do you rate this training/workshop programme? (Please tick against the selected option)

Average		Good		Very good	✓	excellent	
---------	--	------	--	-----------	---	-----------	--

Q. 2: which issues discussed in the training/workshop programme have raised your awareness level?
(Please tick against the selected option)

Issues	Average	Good
Awareness about social, Gender safeguards and OHS		✓
Awareness about Gender Action Plan (GAP)		✓
Need for safeguards and gender equality		✓
Responsibilities of contractors		✓
Implementation of Social, Environment Safeguards and Gender Action Plan (GAP) measures		✓
Outputs of the Authority		✓
Benefits of Social, Environment Safeguards and Gender Action Plan (GAP) measures		✓

Q. 3: which issues, do you think should be discussed in the future training / workshop programmes?
(Please write in short or in bullet points)

① L&T, NGO & SHG and local association may be included in the next programme.

Q. 4: the technique of presentation was found interesting and motivating you? (Please tick against the selected option)

Average		Good		Very good	✓	excellent	
---------	--	------	--	-----------	---	-----------	--

Q. 5: overall training/workshop programme was useful? (Please tick against the selected option)

Yes	✓	No		Can't say	
-----	---	----	--	-----------	--

Name: Dilip Das

Designation: GM, LKHEP.

From:

Role in APGCL/LKHEP project:

Mobile no.:

Email Id:

(Optional)

**Training Programme of
Implementation of Social, Environment Safeguards and Gender Action Plan (GAP)
120 MW LKHEP, In Asian Development Bank (ADB) operations
Assam Power Sector Investment Program - Tranche 3**

FEEDBACK FORM

Q. 1: how do you rate this training/workshop programme? (Please tick against the selected option)

Average		Good		Very good	<input checked="" type="checkbox"/>	excellent	
---------	--	------	--	-----------	-------------------------------------	-----------	--

Q. 2: which issues discussed in the training/workshop programme have raised your awareness level?
(Please tick against the selected option)

Issues	Average	Good
Awareness about social, Gender safeguards and OHS		<input checked="" type="checkbox"/>
Awareness about Gender Action Plan (GAP)		<input checked="" type="checkbox"/>
Need for safeguards and gender equality		<input checked="" type="checkbox"/>
Responsibilities of contractors		<input checked="" type="checkbox"/>
Implementation of Social, Environment Safeguards and Gender Action Plan (GAP) measures		<input checked="" type="checkbox"/>
Outputs of the Authority		<input checked="" type="checkbox"/>
Benefits of Social, Environment Safeguards and Gender Action Plan (GAP) measures		<input checked="" type="checkbox"/>

Q. 3: which issues, do you think should be discussed in the future training / workshop programmes?
(Please write in short or in bullet points)

- ① Methods of community consultation
- ② Social Monitoring Preparation -

Q. 4: the technique of presentation was found interesting and motivating you? (Please tick against the selected option)

Average		Good		Very good	<input checked="" type="checkbox"/>	excellent	
---------	--	------	--	-----------	-------------------------------------	-----------	--

Q. 5: overall training/workshop programme was useful? (Please tick against the selected option)

Yes	<input checked="" type="checkbox"/>	No		Can't say	
-----	-------------------------------------	----	--	-----------	--

Name: *Jayandan Rongpa* Designation: *DGM (c)*
From:
Role in APGCL/LKHEP project: *Overall civil works monitoring*
Mobile no.: *8638014206* Email Id:
(Optional)

**Training Programme of
Implementation of Social, Environment Safeguards and Gender Action Plan (GAP)
120 MW LKHEP, In Asian Development Bank (ADB) operations
Assam Power Sector Investment Program - Tranche 3**

FEEDBACK FORM

Q. 1: how do you rate this training/workshop programme? (Please tick against the selected option)

Average		Good		Very good		excellent	<input checked="" type="checkbox"/>
---------	--	------	--	-----------	--	-----------	-------------------------------------

Q. 2: which issues discussed in the training/workshop programme have raised your awareness level?
(Please tick against the selected option)

Issues	Average	Good
Awareness about social, Gender safeguards and OHS		<input checked="" type="checkbox"/>
Awareness about Gender Action Plan (GAP)		<input checked="" type="checkbox"/>
Need for safeguards and gender equality		<input checked="" type="checkbox"/>
Responsibilities of contractors		<input checked="" type="checkbox"/>
Implementation of Social, Environment Safeguards and Gender Action Plan (GAP) measures		<input checked="" type="checkbox"/>
Outputs of the Authority		<input checked="" type="checkbox"/>
Benefits of Social, Environment Safeguards and Gender Action Plan (GAP) measures		<input checked="" type="checkbox"/>

Q. 3: which issues, do you think should be discussed in the future training / workshop programmes?
(Please write in short or in bullet points)

Let us include more no. of people in the meeting like local bodies

Q. 4: the technique of presentation was found interesting and motivating you? (Please tick against the selected option)

Average		Good		Very good		excellent	<input checked="" type="checkbox"/>
---------	--	------	--	-----------	--	-----------	-------------------------------------

Q. 5: overall training/workshop programme was useful? (Please tick against the selected option)

Yes	<input checked="" type="checkbox"/>	No		Can't say	
-----	-------------------------------------	----	--	-----------	--

Name: *Aminesh Saikia*

Designation: *DM(C)*

From: *LKHEP-APGCL*

Role in APGCL/LKHEP project: *AG-MKOL(C)*

Mobile no.:
(Optional)

Email Id: *amineshmail22@gmail.com*

**Training Programme of
Implementation of Social, Environment Safeguards and Gender Action Plan (GAP)
120 MW LKHEP, In Asian Development Bank (ADB) operations
Assam Power Sector Investment Program - Tranche 3**

FEEDBACK FORM

Q. 1: how do you rate this training/workshop programme? (Please tick against the selected option)

Average		Good	<input checked="" type="checkbox"/>	Very good		excellent	
---------	--	------	-------------------------------------	-----------	--	-----------	--

Q. 2: which issues discussed in the training/workshop programme have raised your awareness level? (Please tick against the selected option)

Issues	Average	Good
Awareness about social, Gender safeguards and OHS		<input checked="" type="checkbox"/>
Awareness about Gender Action Plan (GAP)		<input checked="" type="checkbox"/>
Need for safeguards and gender equality		<input checked="" type="checkbox"/>
Responsibilities of contractors		<input checked="" type="checkbox"/>
Implementation of Social, Environment Safeguards and Gender Action Plan (GAP) measures		<input checked="" type="checkbox"/>
Outputs of the Authority		<input checked="" type="checkbox"/>
Benefits of Social, Environment Safeguards and Gender Action Plan (GAP) measures		<input checked="" type="checkbox"/>

Q. 3: which issues, do you think should be discussed in the future training / workshop programmes? (Please write in short or in bullet points)

Let the programme may be socially monitored

Q. 4: the technique of presentation was found interesting and motivating you? (Please tick against the selected option)

Average		Good	<input checked="" type="checkbox"/>	Very good		excellent	
---------	--	------	-------------------------------------	-----------	--	-----------	--

Q. 5: overall training/workshop programme was useful? (Please tick against the selected option)

Yes		No		Can't say	
-----	--	----	--	-----------	--

Name: *B. Difaosa*

Designation:

From:

AMCO

Role in APGCL/LKHEP project:

Mobile no.:
(Optional)

Email Id: *difaosbijn@gosai.co*

Implementation of Social, Environment Safeguards and Gender Action Plan (GAP)
120 MW LKHEP, In Asian Development Bank (ADB) operations
Assam Power Sector Investment Program - Tranche 3

FEEDBACK FORM

Q. 1: how do you rate this training/workshop programme? (Please tick against the selected option)

Average		Good		Very good	✓	excellent	
---------	--	------	--	-----------	---	-----------	--

Q. 2: which issues discussed in the training/workshop programme have raised your awareness level? (Please tick against the selected option)

Issues	Average	Good
Awareness about social, Gender safeguards and OHS		✓
Awareness about Gender Action Plan (GAP)		✓
Need for safeguards and gender equality		✓
Responsibilities of contractors		✓
Implementation of Social, Environment Safeguards and Gender Action Plan (GAP) measures		✓
Outputs of the Authority		✓
Benefits of Social, Environment Safeguards and Gender Action Plan (GAP) measures		✓

Q. 3: which issues, do you think should be discussed in the future training / workshop programmes? (Please write in short or in bullet points)

① Social Monitoring Programme should be concern.

Q. 4: the technique of presentation was found interesting and motivating you? (Please tick against the selected option)

Average		Good		Very good	✓	excellent	
---------	--	------	--	-----------	---	-----------	--

Q. 5: overall training/workshop programme was useful? (Please tick against the selected option)

Yes	✓	No		Can't say	
-----	---	----	--	-----------	--

Name: *Dijanta Datta*

Designation: *JM(c)*

From: *APGCL, LKHEP*

Role in APGCL/LKHEP project: *JM(c)*

Mobile no.: *7086290498*
(Optional)

Email id: *dijantadatta001.dd@gmail.com*

**Training Programme of
Implementation of Social, Environment Safeguards and Gender Action Plan (GAP)
120 MW LKHEP, In Asian Development Bank (ADB) operations
Assam Power Sector Investment Program - Tranche 3**

FEEDBACK FORM

Q. 1: how do you rate this training/workshop programme? (Please tick against the selected option)

Average	Good	Very good	excellent
---------	------	-----------	-----------

Q. 2: which issues discussed in the training/workshop programme have raised your awareness level? (Please tick against the selected option)

Issues	Average	Good
Awareness about social, Gender safeguards and OHS	✓	
Awareness about Gender Action Plan (GAP)	✓	
Need for safeguards and gender equality	✓	
Responsibilities of contractors	✓	
Implementation of Social, Environment Safeguards and Gender Action Plan (GAP) measures	✓	
Outputs of the Authority	✓	
Benefits of Social, Environment Safeguards and Gender Action Plan (GAP) measures	✓	

Q. 3: which issues, do you think should be discussed in the future training / workshop programmes? (Please write in short or in bullet points)

No need of Such Training.

Q. 4: the technique of presentation was found interesting and motivating you? (Please tick against the selected option)

Average	Good	Very good	excellent
---------	------	-----------	-----------

Q. 5: overall training/workshop programme was useful? (Please tick against the selected option)

Yes	No ✓	Can't say
-----	------	-----------

Name: *Arunabh Borah*

Designation: *JM (C)*

From: *LKHEP, APGCL*

Role in APGCL/LKHEP project:

Mobile no.:
(Optional)

Email id: *arunabhbora2@gmail.com*

**Training Programme of
Implementation of Social, Environment Safeguards and Gender Action Plan (GAP)
120 MW LKHEP, In Asian Development Bank (ADB) operations
Assam Power Sector Investment Program - Tranche 3**

FEEDBACK FORM

Q. 1: how do you rate this training/workshop programme? (Please tick against the selected option)

Average	<input type="checkbox"/>	Good	<input type="checkbox"/>	Very good	<input type="checkbox"/>	excellent	<input type="checkbox"/>
---------	--------------------------	------	--------------------------	-----------	--------------------------	-----------	--------------------------

Q. 2: which issues discussed in the training/workshop programme have raised your awareness level?
(Please tick against the selected option)

Issues	Average	Good
Awareness about social, Gender safeguards and OHS	<input checked="" type="checkbox"/>	<input type="checkbox"/>
Awareness about Gender Action Plan (GAP)	<input checked="" type="checkbox"/>	<input type="checkbox"/>
Need for safeguards and gender equality	<input checked="" type="checkbox"/>	<input type="checkbox"/>
Responsibilities of contractors	<input checked="" type="checkbox"/>	<input type="checkbox"/>
Implementation of Social, Environment Safeguards and Gender Action Plan (GAP) measures	<input checked="" type="checkbox"/>	<input type="checkbox"/>
Outputs of the Authority	<input checked="" type="checkbox"/>	<input type="checkbox"/>
Benefits of Social, Environment Safeguards and Gender Action Plan (GAP) measures	<input checked="" type="checkbox"/>	<input type="checkbox"/>

Q. 3: which issues, do you think should be discussed in the future training / workshop programmes?
(Please write in short or in bullet points)

No need of such training.

Q. 4: the technique of presentation was found interesting and motivating you? (Please tick against the selected option)

Average	<input checked="" type="checkbox"/>	Good	<input type="checkbox"/>	Very good	<input type="checkbox"/>	excellent	<input type="checkbox"/>
---------	-------------------------------------	------	--------------------------	-----------	--------------------------	-----------	--------------------------

Q. 5: overall training/workshop programme was useful? (Please tick against the selected option)

Yes	<input type="checkbox"/>	No	<input checked="" type="checkbox"/>	Can't say	<input type="checkbox"/>
-----	--------------------------	----	-------------------------------------	-----------	--------------------------

Name: *Animesh Barman.*

Designation: *JM(c)*

From: *LKHEP, APGCL*

Role in APGCL/LKHEP project:

Mobile no.:
(Optional)

Email Id: *animeshbarman60@gmail.com*

**Training Programme of
Implementation of Social, Environment Safeguards and Gender Action Plan (GAP)
120 MW LKHEP, In Asian Development Bank (ADB) operations
Assam Power Sector Investment Program - Tranche 3**

FEEDBACK FORM

Q. 1: how do you rate this training/workshop programme? (Please tick against the selected option)

Average	<input checked="" type="checkbox"/>	Good	<input type="checkbox"/>	Very good	<input type="checkbox"/>	excellent	<input type="checkbox"/>
---------	-------------------------------------	------	--------------------------	-----------	--------------------------	-----------	--------------------------

Q. 2: which issues discussed in the training/workshop programme have raised your awareness level?
(Please tick against the selected option)

Issues	Average	Good
Awareness about social, Gender safeguards and OHS	<input checked="" type="checkbox"/>	<input type="checkbox"/>
Awareness about Gender Action Plan (GAP)	<input checked="" type="checkbox"/>	<input type="checkbox"/>
Need for safeguards and gender equality	<input checked="" type="checkbox"/>	<input type="checkbox"/>
Responsibilities of contractors	<input checked="" type="checkbox"/>	<input type="checkbox"/>
Implementation of Social, Environment Safeguards and Gender Action Plan (GAP) measures	<input checked="" type="checkbox"/>	<input type="checkbox"/>
Outputs of the Authority	<input checked="" type="checkbox"/>	<input type="checkbox"/>
Benefits of Social, Environment Safeguards and Gender Action Plan (GAP) measures	<input checked="" type="checkbox"/>	<input type="checkbox"/>

Q. 3: which issues, do you think should be discussed in the future training / workshop programmes?
(Please write in short or in bullet points)

Not need of such training

Q. 4: the technique of presentation was found interesting and motivating you? (Please tick against the selected option)

Average	<input checked="" type="checkbox"/>	Good	<input type="checkbox"/>	Very good	<input type="checkbox"/>	excellent	<input type="checkbox"/>
---------	-------------------------------------	------	--------------------------	-----------	--------------------------	-----------	--------------------------

Q. 5: overall training/workshop programme was useful? (Please tick against the selected option)

Yes	<input type="checkbox"/>	No	<input checked="" type="checkbox"/>	Can't say	<input type="checkbox"/>
-----	--------------------------	----	-------------------------------------	-----------	--------------------------

Name: *Posag Jyoti Ligira*

Designation: *DMCE*

From: *LKHEP, AP&CL*

Role in APGCL/LKHEP project:

Mobile no.:
(Optional)

Email Id: *posagligira@gmail.com*